

PHF2 Antibody

Rabbit Polyclonal

Antigen Affinity Purified

Protein ID NP_005383.3

Catalog No. A303-457A

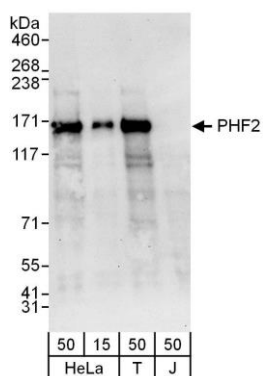
GeneID 5253

Lot No. A303-457A-1



| | |
|------------------------------|---|
| APPLICATIONS | WB |
| SPECIES REACTIVITY | Human |
| AMOUNT | 100 µl |
| CONCENTRATION | 1000 µg/ml |
| STORAGE/SHELF LIFE | 2 - 8° C / 1 year from date of receipt |
| PHYSICAL STATE | Liquid |
| BUFFER | Tris-citrate/phosphate buffer, pH 7 to 8 containing 0.09% Sodium Azide |
| ISOTYPE | IgG |
| ORIGIN | USA |
| PRODUCTION PROCEDURES | <p>Antibody was affinity purified using an epitope specific to PHF2 immobilized on solid support.</p> <p>The epitope recognized by A303-457A maps to a region between residue 650 and 700 of human PHD finger protein 2 using the numbering given in entry NP_005383.3 (GeneID 5253).</p> <p>Antibody concentration was determined by extinction coefficient: absorbance at 280 nm of 1.4 equals 1.0 mg of IgG.</p> |
| APPLICATIONS | <p>Centrifuge tube to remove product from lid. Optimal working dilutions should be determined experimentally by the investigator. Prepare working dilution immediately before use.</p> <p>Western Blot 1:2,000 - 1:10,000</p> <p>Immunoprecipitation Not recommended</p> |
| APPLICATION NOTES | Western blot of lysates performed using standard western blot reagents and 4-8% SDS-PAGE. |
| ADDITIONAL INFO | <p>https://www.bethyl.com/product/A303-457A</p> <p>Use the link above to view SDS, a current list of citations, and other product specific information.</p> |

This document certifies that this product has met all of the quality control standards defined by Bethyl Laboratories, Inc.
Eric McIntush, PhD | Chief Scientific Officer Date: June 21, 2019



Detection of human PHF2 by western blot. *Samples:* Whole cell lysate from HeLa (15 and 50 μ g), HEK293T (T; 50 μ g) and Jurkat (J; 50 μ g) cells. *Antibodies:* Affinity purified rabbit anti-PHF2 antibody A303-457A used for WB at 0.1 μ g/ml. *Detection:* Chemiluminescence with an exposure time of 30 seconds.