

SNRNP200 Antibody

Rabbit Polyclonal

Antigen Affinity Purified

Protein ID NP_054733.2

Catalog No. A303-454A

GeneID 23020

Lot No. A303-454A-1



APPLICATIONS WB, IP, IHC

SPECIES REACTIVITY Human, Mouse

PRESUMED REACTIVITY Based on 100% sequence identity, this antibody is predicted to react with Rat

AMOUNT 100 µl

CONCENTRATION 1000 µg/ml

STORAGE/SHELF LIFE 2 - 8° C / 1 year from date of receipt

PHYSICAL STATE Liquid

BUFFER Tris-citrate/phosphate buffer, pH 7 to 8 containing 0.09% Sodium Azide

ISOTYPE IgG

ORIGIN USA

PRODUCTION PROCEDURES Antibody was affinity purified using an epitope specific to SNRNP200 immobilized on solid support.

The epitope recognized by A303-454A maps to a region between residue 400 and 450 of human Small Nuclear Ribonucleoprotein 200kDa using the numbering given in entry NP_054733.2 (GeneID 23020).

Antibody concentration was determined by extinction coefficient: absorbance at 280 nm of 1.4 equals 1.0 mg of IgG.

APPLICATIONS Centrifuge tube to remove product from lid. Optimal working dilutions should be determined experimentally by the investigator. Prepare working dilution immediately before use.

Western Blot 1:2,000 – 1:10,000

Immunoprecipitation 2 – 10 µg/mg lysate

Immunohistochemistry 1:500 – 1:2,000. Epitope retrieval with citrate buffer pH 6.0 is recommended for FFPE tissue sections.

APPLICATION NOTES Western blot of immunoprecipitates performed using Normal Pig Serum (Cat. No. S100-020), Goat anti-Rabbit Light Chain HRP Conjugate (Cat. No. A120-113P) and 4-8% SDS-PAGE (link to IP-western blot protocol in Additional Info section below).

Western blot of lysates performed using standard western blot reagents and 4-8% SDS-PAGE.

IHC HUMAN CONTROLS Breast Carcinoma, Colon Carcinoma, Stomach Adenocarcinoma

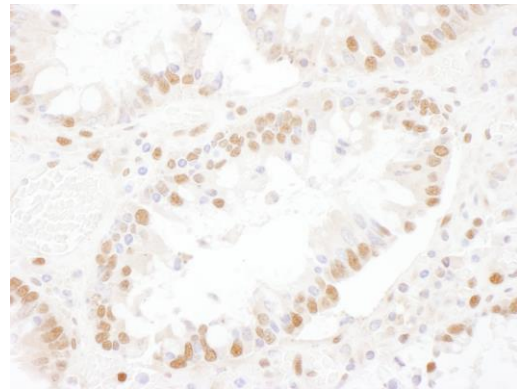
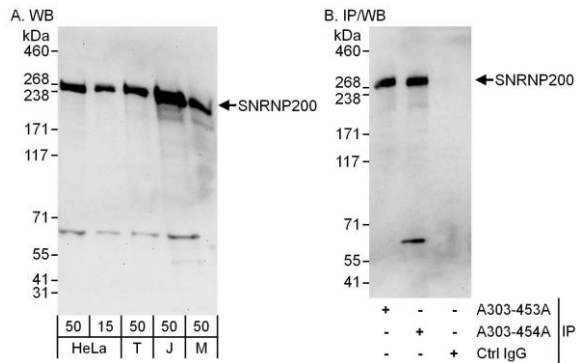
ADDITIONAL INFO <https://www.bethyl.com/product/A303-454A>

Use the link above to view SDS, a current list of citations, and other product specific information.

IP-western blot protocol: https://www.bethyl.com/content/protocol_IP_WB

This document certifies that this product has met all of the quality control standards defined by Bethyl Laboratories, Inc.
Eric McIntush, PhD | Chief Scientific Officer

Date: June 21, 2019



Detection of human and mouse SNRNP200 by western blot (h and m) and immunoprecipitation (h). *Samples:* Whole cell lysate from HeLa (15 and 50 μ g for WB; 1 mg for IP, 20% of IP loaded), HEK293T (T; 50 μ g), Jurkat (J; 50 μ g) and mouse NIH 3T3 (M; 50 μ g) cells. *Antibodies:* Affinity purified rabbit anti-SNRNP200 antibody A303-454A used for WB at 0.1 μ g/ml (A) and 1 μ g/ml (B) and used for IP at 6 μ g/mg lysate. SNRNP200 was also immunoprecipitated by rabbit anti-SNRNP200 antibody A303-453A, which recognizes an upstream epitope. *Detection:* Chemiluminescence with exposure times of 30 seconds (A) and 10 seconds (B).

Detection of human SNRNP200 by immunohistochemistry. *Sample:* FFPE section of human colon carcinoma. *Antibody:* Affinity purified rabbit anti-SNRNP200 (Cat. No. A303-454A Lot1) used at a dilution of 1:1,000 (1 μ g/ml). *Detection:* DAB. *Counterstain:* hematoxylin (blue).