

# BRCA2 Antibody

Rabbit Polyclonal

Antigen Affinity Purified

Protein ID NP\_000050.1

Catalog No. A303-434A

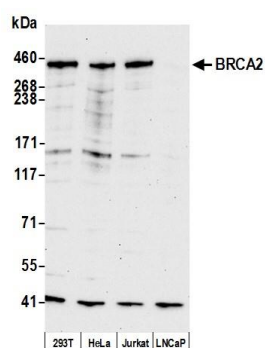
GeneID 675

Lot No. A303-434A-3

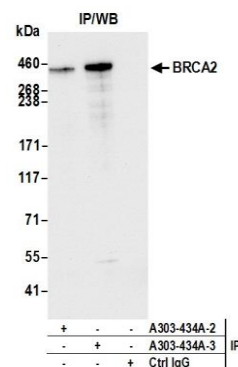


<b>APPLICATIONS</b>	WB, IP
<b>SPECIES REACTIVITY</b>	Human
<b>AMOUNT</b>	100 µl
<b>CONCENTRATION</b>	1000 µg/ml
<b>STORAGE/SHELF LIFE</b>	2 – 8° C / 1 year from date of receipt
<b>PHYSICAL STATE</b>	Liquid
<b>BUFFER</b>	Tris-citrate/phosphate buffer, pH 7 to 8 containing 0.09% Sodium Azide
<b>ISOTYPE</b>	IgG
<b>ORIGIN</b>	USA
<b>PRODUCTION PROCEDURES</b>	<p>Antibody was affinity purified using an epitope specific to BRCA2 immobilized on solid support.</p> <p>The epitope recognized by A303-434A maps to a region between residue 450 and 500 of human Breast Cancer 2, Early Onset using the numbering given in entry NP_000050.1 (GeneID 675).</p> <p>Antibody concentration was determined by extinction coefficient: absorbance at 280 nm of 1.4 equals 1.0 mg of IgG.</p>
<b>APPLICATIONS</b>	<p>Centrifuge tube to remove product from lid. Optimal working dilutions should be determined experimentally by the investigator. Prepare working dilution immediately before use.</p> <p>Western Blot                      1:10,000 – 1:25,000</p> <p>Immunoprecipitation          2 – 10 µg/mg lysate</p>
<b>APPLICATION NOTES</b>	<p>Western blot of immunoprecipitates performed using Normal Pig Serum (Cat. No. S100-020), Goat anti-Rabbit Light Chain HRP Conjugate (Cat. No. A120-113P) and 3-8% SDS-PAGE (link to IP-western blot protocol in Additional Info section below).</p> <p>Western blot of lysates performed using standard western blot reagents and 3-8% SDS-PAGE.</p>
<b>ADDITIONAL INFO</b>	<p><a href="https://www.bethyl.com/product/A303-434A">https://www.bethyl.com/product/A303-434A</a></p> <p>Use the link above to view SDS, a current list of citations, and other product specific information. IP-western blot protocol <a href="https://www.bethyl.com/content/protocol_IP_WB">https://www.bethyl.com/content/protocol_IP_WB</a></p>

This document certifies that this product has met all of the quality control standards defined by Bethyl Laboratories, Inc.  
Eric McIntush, PhD | Chief Scientific Officer Date: July 22, 2019



**Detection of human BRCA2 by western blot.** *Samples:* Whole cell lysate (5 µg) from HEK293T, HeLa, Jurkat, and LNCaP cells prepared using NETN lysis buffer. *Antibody:* Affinity purified rabbit anti-BRCA2 antibody A303-434A (lot A303-434A-3) used for WB at 0.04 µg/ml. *Detection:* Chemiluminescence with an exposure time of 30 seconds.



**Detection of human BRCA2 by western blot of immunoprecipitates.** *Samples:* Whole cell lysate (1.0 mg per IP reaction; 20% of IP loaded) from HEK293T cells prepared using NETN lysis buffer. *Antibodies:* Affinity purified rabbit anti-BRCA2 antibody A303-434A (lot A303-434A-3) used for IP at 6 µg per reaction. BRCA2 was also immunoprecipitated by a previous lot of this antibody (lot A303-434A-2). For blotting immunoprecipitated BRCA2, A303-434A was used at 0.04 µg/ml. *Detection:* Chemiluminescence with an exposure time of 3 seconds.