

Lamin-A Antibody

Rabbit Polyclonal

Antigen Affinity Purified

Protein ID NP_733821.1

Catalog No. A303-432A

GeneID 4000

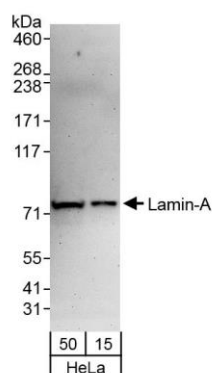
Lot No. A303-432A-1



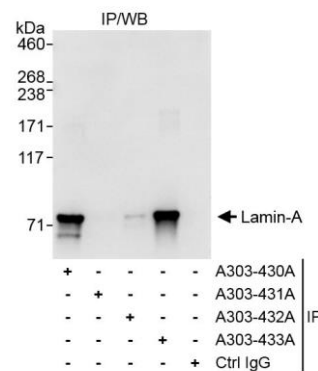
APPLICATIONS	WB, IHC, ICC-IF								
SPECIES REACTIVITY	Human, Mouse								
PRESUMED REACTIVITY	Based on 100% sequence identity, this antibody is predicted to react with Rat and Pig								
AMOUNT	100 µl								
CONCENTRATION	200 µg/ml								
STORAGE/SHELF LIFE	2 – 8° C / 1 year from date of receipt								
PHYSICAL STATE	Liquid								
BUFFER	Tris-buffered Saline containing 0.1% BSA and 0.09% Sodium Azide								
ISOTYPE	IgG								
ORIGIN	USA								
PRODUCTION PROCEDURES	<p>Antibody was affinity purified using an epitope specific to Lamin-A immobilized on solid support.</p> <p>The epitope recognized by A303-432A maps to a region between residue 400 and 450 of human Lamin A using the numbering given in entry NP_733821.1 (GeneID 4000).</p> <p>Antibody concentration was determined by extinction coefficient: absorbance at 280 nm of 1.4 equals 1.0 mg of IgG.</p>								
APPLICATIONS	<p>Centrifuge tube to remove product from lid. Optimal working dilutions should be determined experimentally by the investigator. Prepare working dilution immediately before use.</p> <table><tr><td>Western Blot</td><td>1:2,000 – 1:10,000</td></tr><tr><td>Immunoprecipitation</td><td>Not recommended</td></tr><tr><td>Immunohistochemistry</td><td>1:100 – 1:500. Epitope retrieval with citrate buffer pH 6.0 is recommended for FFPE tissue sections.</td></tr><tr><td>Immunofluorescence (ICC)</td><td>1:50 – 1:500. Formaldehyde fixation is recommended. Permeabilization with Triton-X 100 is recommended for formaldehyde-fixed cells.</td></tr></table>	Western Blot	1:2,000 – 1:10,000	Immunoprecipitation	Not recommended	Immunohistochemistry	1:100 – 1:500. Epitope retrieval with citrate buffer pH 6.0 is recommended for FFPE tissue sections.	Immunofluorescence (ICC)	1:50 – 1:500. Formaldehyde fixation is recommended. Permeabilization with Triton-X 100 is recommended for formaldehyde-fixed cells.
Western Blot	1:2,000 – 1:10,000								
Immunoprecipitation	Not recommended								
Immunohistochemistry	1:100 – 1:500. Epitope retrieval with citrate buffer pH 6.0 is recommended for FFPE tissue sections.								
Immunofluorescence (ICC)	1:50 – 1:500. Formaldehyde fixation is recommended. Permeabilization with Triton-X 100 is recommended for formaldehyde-fixed cells.								
APPLICATION NOTES	Western blot of lysates performed using standard western blot reagents and 4–8% SDS-PAGE.								
IHC HUMAN CONTROLS	Breast Carcinoma, Colon Carcinoma, Linitis Plastica Stomach Cancer, Osteosarcoma, Ovarian Carcinoma, Stomach Adenocarcinoma, Testicular Seminoma, HeLa Cells								
IHC MOUSE CONTROLS	Hybridoma Tumor, Renal Cell Carcinoma, Teratoma								
ADDITIONAL INFO	<p>https://www.bethyl.com/product/A303-432A</p> <p>Use the link above to view SDS, a current list of citations, and other product specific information.</p>								

This document certifies that this product has met all of the quality control standards defined by Bethyl Laboratories, Inc.
Eric McIntush, PhD | Chief Scientific Officer

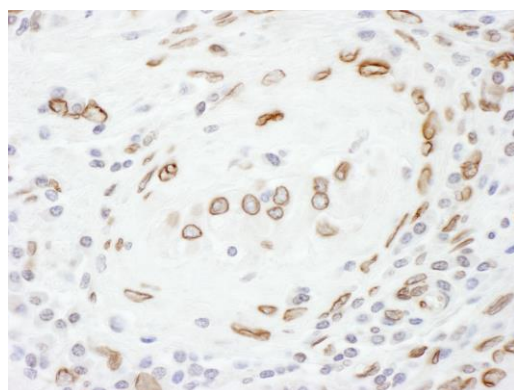
Date: November 12, 2019



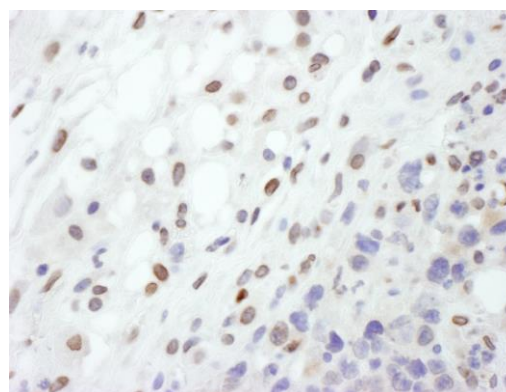
Detection of human Lamin-A by western blot. *Samples:* Whole cell lysate (15 and 50 µg) from HeLa cells. *Antibody:* Affinity purified rabbit anti-Lamin-A antibody A303-432A (lot A303-432A-1) used at 0.04 µg/ml. *Detection:* Chemiluminescence with an exposure time of 3 minutes.



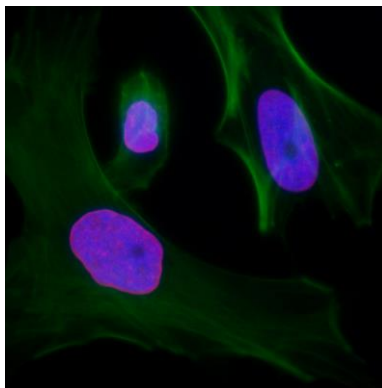
Detection of human Lamin-A by western blot of immunoprecipitates. *Samples:* Whole cell lysate (1 mg for IP, 20% of IP loaded) from HeLa cells. *Antibodies:* Affinity purified rabbit anti-Lamin-A antibody A303-432A (lot A303-432A-1) used for IP at 6 µg/mg lysate. Lamin-A was successfully immunoprecipitated by rabbit anti-Lamin-A/C antibody A303-430A, which recognizes an upstream epitope, and by rabbit anti-Lamin-A antibody A303-433A, which recognizes a downstream epitope. For blotting immunoprecipitated Lamin-A, A303-432A was used at 0.4 µg/ml. *Detection:* Chemiluminescence with exposure time of 1 second.



Detection of human Lamin-A by immunohistochemistry. *Sample:* FFPE section of human testicular seminoma. *Antibody:* Affinity purified rabbit anti- Lamin-A (Cat. No. A303-432A Lot1) used at a dilution of 1:200 (1 µg/ml). *Detection:* DAB



Detection of mouse Lamin-A by immunohistochemistry. *Sample:* FFPE section of mouse plasmacytoma. *Antibody:* Affinity purified rabbit anti- Lamin-A (Cat. No. A303-432A Lot1) used at a dilution of 1:200 (1 µg/ml). *Detection:* DAB

**Detection of human Lamin-A by immunocytochemistry.**

Samples: Formaldehyde-fixed asynchronous HeLa cells.

Antibody: Affinity purified rabbit anti- Lamin-A (Cat. No. A303-432A Lot1) used at a dilution of 1:200 (1 µg/ml).

Detection: Red-fluorescent goat anti-rabbit IgG-heavy and light chain cross-adsorbed Antibody DyLight® 594 Conjugated used at a dilution of 1:100.