

# Lamin-A/C Antibody

Rabbit Polyclonal

Antigen Affinity Purified

Protein ID NP\_733821.1

Catalog No. A303-431A

GeneID 4000

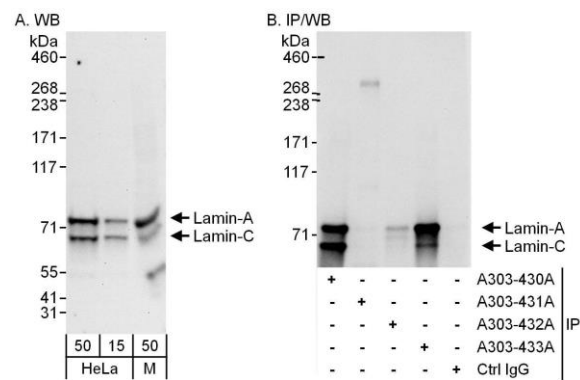
Lot No. A303-431A-1



APPLICATIONS	WB				
SPECIES REACTIVITY	Human, Mouse				
PRESUMED REACTIVITY	Based on 100% sequence identity, this antibody is predicted to react with Rat and Pig				
AMOUNT	100 µl				
CONCENTRATION	200 µg/ml				
STORAGE/SHELF LIFE	2 – 8° C / 1 year from date of receipt				
PHYSICAL STATE	Liquid				
BUFFER	Tris-buffered Saline containing 0.1% BSA and 0.09% Sodium Azide				
ISOTYPE	IgG				
ORIGIN	USA				
PRODUCTION PROCEDURES	<p>Antibody was affinity purified using an epitope specific to Lamin-A/C immobilized on solid support.</p> <p>The epitope recognized by A303-431A maps to a region between residue 150 and 200 of human Lamin A/Lamin C using the numbering given in entry NP_733821.1 (GeneID 4000).</p> <p>Antibody concentration was determined by extinction coefficient: absorbance at 280 nm of 1.4 equals 1.0 mg of IgG.</p>				
APPLICATIONS	<p>Centrifuge tube to remove product from lid. Optimal working dilutions should be determined experimentally by the investigator. Prepare working dilution immediately before use.</p> <table><tr><td>Western Blot</td><td>1:2,000 – 1:10,000</td></tr><tr><td>Immunoprecipitation</td><td>Not recommended</td></tr></table>	Western Blot	1:2,000 – 1:10,000	Immunoprecipitation	Not recommended
Western Blot	1:2,000 – 1:10,000				
Immunoprecipitation	Not recommended				
APPLICATION NOTES	Western blot of lysates performed using standard western blot reagents and 4-8% SDS-PAGE.				
ADDITIONAL INFO	<p><a href="https://www.bethyl.com/product/A303-431A">https://www.bethyl.com/product/A303-431A</a></p> <p>Use the link above to view SDS, a current list of citations, and other product specific information.</p>				

This document certifies that this product has met all of the quality control standards defined by Bethyl Laboratories, Inc.  
Eric McIntush, PhD | Chief Scientific Officer

Date: June 21, 2019



**Detection of human and mouse Lamin-A and Lamin-C by western blot (h and m) and immunoprecipitation (h).**  
*Samples:* Whole cell lysate from HeLa (15 and 50 µg for WB; 1 mg for IP, 20% of IP loaded) and mouse NIH 3T3 (M; 50 µg) cells. *Antibodies:* Affinity purified rabbit anti-Lamin-A/C antibody A303-431A used for WB at 0.04 µg/ml (A) and 0.4 µg/ml (B) and used for IP at 6 µg/mg lysate. Lamin-A and Lamin-C were immunoprecipitated by rabbit anti-Lamin-A/C antibody A303-430A, which recognizes an upstream epitope. Lamin-A was also immunoprecipitated by rabbit anti-Lamin-A antibody A303-433A, which recognizes a downstream epitope. *Detection:* Chemiluminescence with exposure times of 30 second (A) and 3 seconds (B).