

# SRAG Antibody

Rabbit Polyclonal

Antigen Affinity Purified

Protein ID NP\_056422.2

Catalog No. A303-411A

GeneID 26097

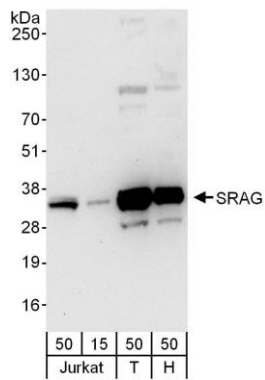
Lot No. A303-411A-1



<b>APPLICATIONS</b>	WB				
<b>SPECIES REACTIVITY</b>	Human				
<b>PRESUMED REACTIVITY</b>	Based on 100% sequence identity, this antibody is predicted to react with Mouse, Rat and Bovine				
<b>AMOUNT</b>	100 µl				
<b>CONCENTRATION</b>	1000 µg/ml				
<b>STORAGE/SHELF LIFE</b>	2 – 8° C / 1 year from date of receipt				
<b>PHYSICAL STATE</b>	Liquid				
<b>BUFFER</b>	Tris-citrate/phosphate buffer, pH 7 to 8 containing 0.09% Sodium Azide				
<b>ISOTYPE</b>	IgG				
<b>ORIGIN</b>	USA				
<b>PRODUCTION PROCEDURES</b>	<p>Antibody was affinity purified using an epitope specific to SRAG immobilized on solid support.</p> <p>The epitope recognized by A303-411A maps to a region between residue 1 and 50 of human Small Protein Rich in Arginine and Glycine using the numbering given in entry NP_056422.2 (GeneID 26097).</p> <p>Antibody concentration was determined by extinction coefficient: absorbance at 280 nm of 1.4 equals 1.0 mg of IgG.</p>				
<b>APPLICATIONS</b>	<p>Centrifuge tube to remove product from lid. Optimal working dilutions should be determined experimentally by the investigator. Prepare working dilution immediately before use.</p> <table><tr><td>Western Blot</td><td>1:500 – 1:2,500</td></tr><tr><td>Immunoprecipitation</td><td>Not recommended</td></tr></table>	Western Blot	1:500 – 1:2,500	Immunoprecipitation	Not recommended
Western Blot	1:500 – 1:2,500				
Immunoprecipitation	Not recommended				
<b>APPLICATION NOTES</b>	Western blot of lysates performed using standard western blot reagents and 4–20% SDS-PAGE.				
<b>ADDITIONAL INFO</b>	<p><a href="https://www.bethyl.com/product/A303-411A">https://www.bethyl.com/product/A303-411A</a></p> <p>Use the link above to view SDS, a current list of citations, and other product specific information.</p>				

This document certifies that this product has met all of the quality control standards defined by Bethyl Laboratories, Inc.  
Eric McIntush, PhD | Chief Scientific Officer

Date: June 21, 2019



**Detection of human SRAG by western blot.** *Samples:* Whole cell lysate from Jurkat (15 and 50 µg), HEK293T (T; 50 µg) and HeLa (H; 50 µg) cells. *Antibody:* Affinity purified rabbit anti-SRAG antibody A303-411A used for WB at 0.4 µg/ml. *Detection:* Chemiluminescence with an exposure time of 30 seconds.