

IRF3 Antibody

Rabbit Polyclonal

Antigen Affinity Purified

Protein ID NP_058545.1

Catalog No. A303-384A

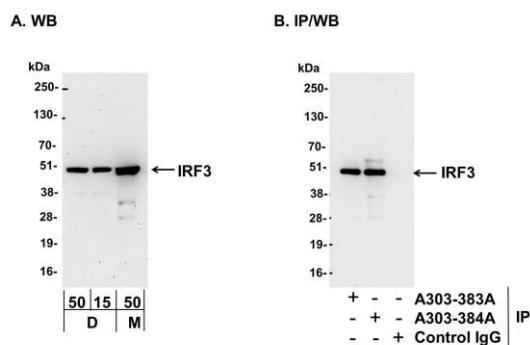
GeneID 54131

Lot No. A303-384A-1



APPLICATIONS	WB, IP
SPECIES REACTIVITY	Mouse
AMOUNT	100 μ l
CONCENTRATION	1000 μ g/ml
STORAGE/SHELF LIFE	2 – 8° C / 1 year from date of receipt
PHYSICAL STATE	Liquid
BUFFER	Tris-citrate/phosphate buffer, pH 7 to 8 containing 0.09% Sodium Azide
ISOTYPE	IgG
ORIGIN	USA
PRODUCTION PROCEDURES	<p>Antibody was affinity purified using an epitope specific to IRF3 immobilized on solid support.</p> <p>The epitope recognized by A303-384A maps to a region between residue 375 and 419 of mouse Interferon Regulatory Factor 3 using the numbering given in entry NP_058545.1 (GeneID 54131).</p> <p>Antibody concentration was determined by extinction coefficient: absorbance at 280 nm of 1.4 equals 1.0 mg of IgG.</p>
APPLICATIONS	<p>Centrifuge tube to remove product from lid. Optimal working dilutions should be determined experimentally by the investigator. Prepare working dilution immediately before use.</p> <p>Western Blot 1:1,000 – 1:2,500</p> <p>Immunoprecipitation 2 – 10 μg/mg lysate</p>
APPLICATION NOTES	<p>Western blot of immunoprecipitates performed using Normal Pig Serum (Cat. No. S100-020), Goat anti-Rabbit Light Chain HRP Conjugate (Cat. No. A120-113P) and 4-20% SDS-PAGE (link to IP-western blot protocol in Additional Info section below).</p> <p>Western blot of lysates performed using standard western blot reagents and 4-20% SDS-PAGE.</p>
ADDITIONAL INFO	<p>https://www.bethyl.com/product/A303-384A</p> <p>Use the link above to view SDS, a current list of citations, and other product specific information. IP-western blot protocol: https://www.bethyl.com/content/protocol_IP_WB</p>

This document certifies that this product has met all of the quality control standards defined by Bethyl Laboratories, Inc.
Eric McIntush, PhD | Chief Scientific Officer Date: June 21, 2019



Detection of mouse IRF3 by western blot and immunoprecipitation. *Samples:* Whole cell lysate from mouse bone marrow dendritic (D; 50 and 15 µg for WB; 1 mg for IP, 20% of IP loaded), and NIH 3T3 (M; 50 µg) cells. *Antibodies:* Affinity purified rabbit anti-IRF3 antibody A303-384A used for WB at 0.4 µg/ml (A) and 1 µg/ml (B) and used for IP at 6 µg/mg lysate. IRF3 was also immunoprecipitated by rabbit anti-IRF3 antibody A303-383A, which recognizes a disparate epitope. *Detection:* Chemiluminescence with exposure times of 3 minutes (A) and 30 seconds (B).