

IRF2 Antibody

Rabbit Polyclonal

Antigen Affinity Purified

Protein ID NP_032417.3

Catalog No. A303-381A

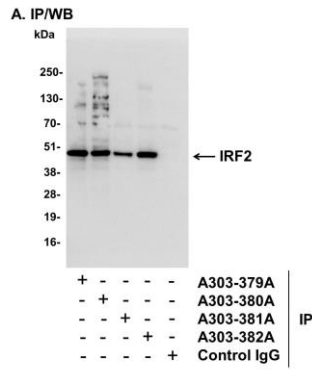
GeneID 16363

Lot No. A303-381A-1

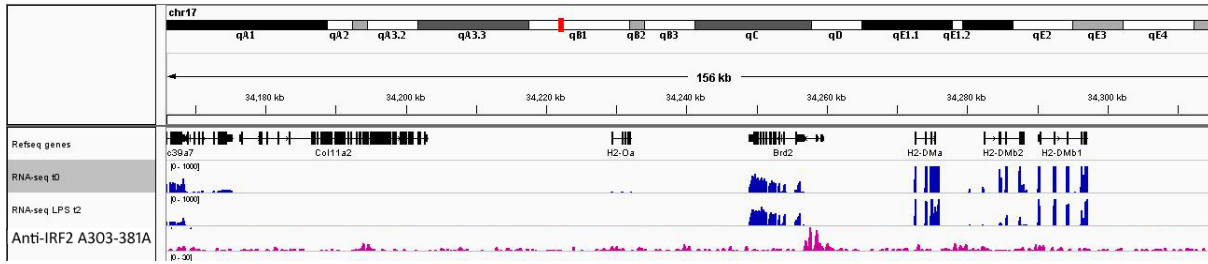


APPLICATIONS	IP, ChIP-Seq						
SPECIES REACTIVITY	Human						
PRESUMED REACTIVITY	Based on 100% sequence identity, this antibody is predicted to react with Mouse						
AMOUNT	100 µl						
CONCENTRATION	1000 µg/ml						
STORAGE/SHELF LIFE	2 - 8° C / 1 year from date of receipt						
PHYSICAL STATE	Liquid						
BUFFER	Tris-citrate/phosphate buffer, pH 7 to 8 containing 0.09% Sodium Azide						
ISOTYPE	IgG						
ORIGIN	USA						
PRODUCTION PROCEDURES	<p>Antibody was affinity purified using an epitope specific to IRF2 immobilized on solid support.</p> <p>The epitope recognized by A303-380A maps to a region between residue 250 and 300 of mouse Interferon Regulatory Factor 2 using the numbering given in entry NP_032417.3 (GeneID 16363).</p> <p>Antibody concentration was determined by extinction coefficient: absorbance at 280 nm of 1.4 equals 1.0 mg of IgG.</p>						
APPLICATIONS	<p>Centrifuge tube to remove product from lid. Optimal working dilutions should be determined experimentally by the investigator. Prepare working dilution immediately before use.</p> <table><tr><td>Western Blot</td><td>Not recommended</td></tr><tr><td>Immunoprecipitation</td><td>2 - 10 µg/mg lysate</td></tr><tr><td>ChIP-Seq</td><td>ChIP-Seq 10 µg/75 µl protein G beads (according to Blecher-Gonen, R. et al.; Nat Protoc. 2013 Mar; 8(3):539-54)</td></tr></table>	Western Blot	Not recommended	Immunoprecipitation	2 - 10 µg/mg lysate	ChIP-Seq	ChIP-Seq 10 µg/75 µl protein G beads (according to Blecher-Gonen, R. et al.; Nat Protoc. 2013 Mar; 8(3):539-54)
Western Blot	Not recommended						
Immunoprecipitation	2 - 10 µg/mg lysate						
ChIP-Seq	ChIP-Seq 10 µg/75 µl protein G beads (according to Blecher-Gonen, R. et al.; Nat Protoc. 2013 Mar; 8(3):539-54)						
APPLICATION NOTES	Western blot of immunoprecipitates performed using Normal Pig Serum (Cat. No. S100-020), Goat anti-Rabbit Light Chain HRP Conjugate (Cat. No. A120-113P) and 4-20% SDS-PAGE (link to IP-western blot protocol in Additional Info section below).						
ADDITIONAL INFO	<p>https://www.bethyl.com/product/A303-381A</p> <p>Use the link above to view SDS, a current list of citations, and other product specific information.</p> <p>IP-western blot protocol: https://www.bethyl.com/content/protocol_IP_WB</p>						

This document certifies that this product has met all of the quality control standards defined by Bethyl Laboratories, Inc.
Eric McIntush, PhD | Chief Scientific Officer Date: June 21, 2019



Detection of human IRF2 by western blot of immunoprecipitates. *Samples:* Whole cell lysate (1 mg for IP, 20% of IP loaded) from human erythroleukemia (HEL) cells. *Antibodies:* Affinity purified rabbit anti-IRF2 antibody A303-381A used for IP at 6 µg/mg lysate. IRF2 was also immunoprecipitated by rabbit anti-IRF2 antibodies A303-379A , A303-380A, and A303-382A, which recognize disparate epitopes. For blotting immunoprecipitated IRF2, A303-380A was used at 1 µg/ml. *Detection:* Chemiluminescence with an exposure time of 3 seconds.



Localization of IRF2 binding sites by ChIP-Sequencing. Chromatin from mouse bone marrow dendritic cells (BMDCs) was immunoprecipitated with anti-IRF2 A303-381A (lot A303-381A-1) and analyzed by DNA sequencing according to methods available at <http://www.weizmann.ac.il/immunology/AmitLab/data-and-method/iChIP/method>. The figure illustrates the peak distribution of IRF2 binding within a 156 kb region of chromosome 17 (pink) as detected by anti-IRF2 A303-381A.