

IRF1 Antibody

Rabbit Polyclonal

Antigen Affinity Purified

Catalog No. A303-376A

Lot No. A303-376A-1

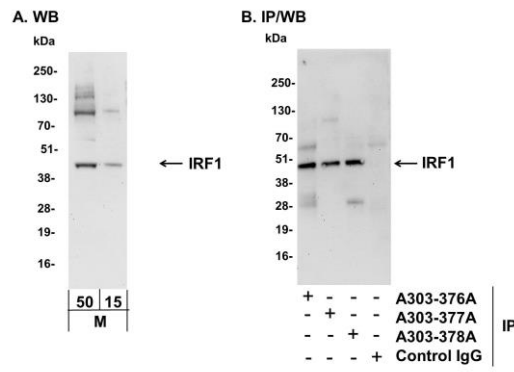
Protein ID NP_032416.1

GeneID 16362



APPLICATIONS	WB, IP
SPECIES REACTIVITY	Mouse
AMOUNT	100 µl
CONCENTRATION	1000 µg/ml
STORAGE/SHELF LIFE	2 - 8° C / 1 year from date of receipt
PHYSICAL STATE	Liquid
BUFFER	Tris-citrate/phosphate buffer, pH 7 to 8 containing 0.09% Sodium Azide
ISOTYPE	IgG
ORIGIN	USA
PRODUCTION PROCEDURES	Antibody was affinity purified using an epitope specific to IRF1 immobilized on solid support. The epitope recognized by A303-376A maps to a region between residue 200 and 250 of mouse Interferon Regulatory Factor 1 using the numbering given in entry NP_032416.1 (GeneID 16362). Antibody concentration was determined by extinction coefficient: absorbance at 280 nm of 1.4 equals 1.0 mg of IgG.
APPLICATIONS	Centrifuge tube to remove product from lid. Optimal working dilutions should be determined experimentally by the investigator. Prepare working dilution immediately before use. Western Blot 1:1,000 - 1:5,000 Immunoprecipitation 2 - 10 µg/mg lysate
APPLICATION NOTES	Western blot of immunoprecipitates performed using Normal Pig Serum (Cat. No. S100-020), Goat anti-Rabbit Light Chain HRP Conjugate (Cat. No. A120-113P) and 4-20% SDS-PAGE (link to IP-western blot protocol in Additional Info section below). Western blot of lysates performed using standard western blot reagents and 4-20% SDS-PAGE.
ADDITIONAL INFO	https://www.bethyl.com/product/A303-376A Use the link above to view SDS, a current list of citations, and other product specific information. IP-western blot protocol: https://www.bethyl.com/content/protocol_IP_WB

This document certifies that this product has met all of the quality control standards defined by Bethyl Laboratories, Inc.
Eric McIntush, PhD | Chief Scientific Officer Date: June 21, 2019



Detection of mouse IRF1 by western blot and immunoprecipitation. *Samples:* Whole cell lysate from NIH 3T3 cells (M; 15 and 50 µg for WB; 1 mg for IP, 20% of IP loaded). *Antibodies:* Affinity purified rabbit anti-IRF1 antibody A303-376A used for WB at 0.2 µg/ml (A) and 1 µg/ml (B) and used for IP at 6 µg/mg lysate. IRF1 was also immunoprecipitated by rabbit anti-IRF1 antibodies A303-377A and A303-378A, which recognize downstream epitopes. *Detection:* Chemiluminescence with exposure times of 60 seconds (A and B).