

# CENP-I Antibody

Rabbit Polyclonal

Antigen Affinity Purified

Protein ID NP\_006724.2

Catalog No. A303-374A

GeneID 2491

Lot No. A303-374A-1



<b>APPLICATIONS</b>	WB, IP
<b>SPECIES REACTIVITY</b>	Human
<b>AMOUNT</b>	100 µl
<b>CONCENTRATION</b>	1000 µg/ml
<b>STORAGE/SHELF LIFE</b>	2 - 8° C / 1 year from date of receipt
<b>PHYSICAL STATE</b>	Liquid
<b>BUFFER</b>	Tris-citrate/phosphate buffer, pH 7 to 8 containing 0.09% Sodium Azide
<b>ISOTYPE</b>	IgG
<b>ORIGIN</b>	USA
<b>PRODUCTION PROCEDURES</b>	Antibody was affinity purified using an epitope specific to CENP-I immobilized on solid support.

The epitope recognized by A303-374A maps to a region between residue 50 and 100 of human Centromere Protein I using the numbering given in entry NP\_006724.2 (GeneID 2491).

Antibody concentration was determined by extinction coefficient: absorbance at 280 nm of 1.4 equals 1.0 mg of IgG.

**APPLICATIONS** Centrifuge tube to remove product from lid. Optimal working dilutions should be determined experimentally by the investigator. Prepare working dilution immediately before use.

Western Blot 1:2,000 - 1:10,000

Immunoprecipitation 2 - 10 µg/mg lysate

**APPLICATION NOTES** Western blot of immunoprecipitates performed using Normal Pig Serum (Cat. No. S100-020), Goat anti-Rabbit Light Chain HRP Conjugate (Cat. No. A120-113P) and 4-8% SDS-PAGE (link to IP-western blot protocol in Additional Info section below).

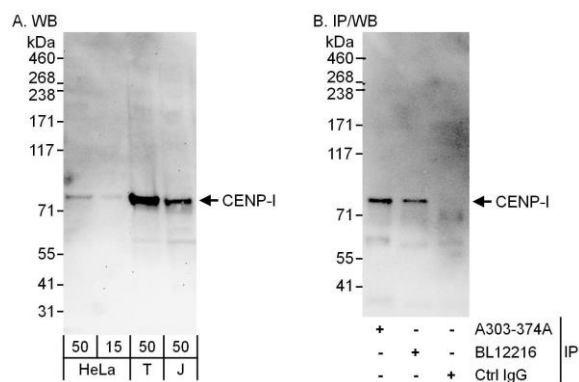
Western blot of lysates performed using standard western blot reagents and 4-8% SDS-PAGE.

**ADDITIONAL INFO** <https://www.bethyl.com/product/A303-374A>

Use the link above to view SDS, a current list of citations, and other product specific information.

IP-western blot protocol: [https://www.bethyl.com/content/protocol\\_IP\\_WB](https://www.bethyl.com/content/protocol_IP_WB)

This document certifies that this product has met all of the quality control standards defined by Bethyl Laboratories, Inc.  
Eric McIntush, PhD | Chief Scientific Officer Date: June 21, 2019



**Detection of human CENP-I by western blot and immunoprecipitation.** *Samples:* Whole cell lysate from HeLa (15 and 50  $\mu\text{g}$  for WB; 1 mg for IP, 20% of IP loaded), HEK293T (T; 50  $\mu\text{g}$ ) and Jurkat (J; 50  $\mu\text{g}$ ) cells. *Antibodies:* Affinity purified rabbit anti-CENP-I antibody A303-374A used for WB at 0.1  $\mu\text{g}/\text{ml}$  (A) and 0.4  $\mu\text{g}/\text{ml}$  (B) and used for IP at 6  $\mu\text{g}/\text{mg}$  lysate. CENP-I was also immunoprecipitated by rabbit anti-CENP-I antibody BL12216, which recognizes a downstream epitope. *Detection:* Chemiluminescence with exposure times of 30 seconds (A) and 10 seconds (B).