

Desmoplakin Antibody

Rabbit Polyclonal

Antigen Affinity Purified

Protein ID NP_004406.2

Catalog No. A303-355A

GeneID 1832

Lot No. A303-355A-1



APPLICATIONS	WB, IP
SPECIES REACTIVITY	Human
AMOUNT	100 µl
CONCENTRATION	1000 µg/ml
STORAGE/SHELF LIFE	2 – 8° C / 1 year from date of receipt
PHYSICAL STATE	Liquid
BUFFER	Tris-citrate/phosphate buffer, pH 7 to 8 containing 0.09% Sodium Azide
ISOTYPE	IgG
ORIGIN	USA
PRODUCTION PROCEDURES	Antibody was affinity purified using an epitope specific to Desmoplakin immobilized on solid support.

The epitope recognized by A303-355A maps to a region between residue 1600 and 1650 of human Desmoplakin using the numbering given in entry NP_004406.2 (GeneID 1832).

Antibody concentration was determined by extinction coefficient: absorbance at 280 nm of 1.4 equals 1.0 mg of IgG.

APPLICATIONS Centrifuge tube to remove product from lid. Optimal working dilutions should be determined experimentally by the investigator. Prepare working dilution immediately before use.

Western Blot 1:2,000 – 1:10,000

Immunoprecipitation 2 – 10 µg/mg lysate

APPLICATION NOTES Western blot of immunoprecipitates performed using Normal Pig Serum (Cat. No. S100-020), Goat anti-Rabbit Light Chain HRP Conjugate (Cat. No. A120-113P) and 3-8% SDS-PAGE (link to IP-western blot protocol in Additional Info section below).

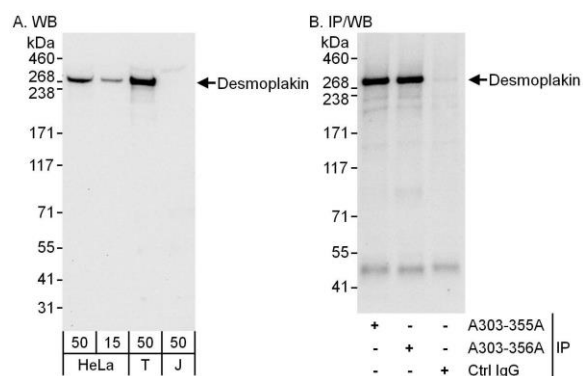
Western blot of lysates performed using standard western blot reagents and 3-8% SDS-PAGE.

ADDITIONAL INFO <https://www.bethyl.com/product/A303-355A>

Use the link above to view SDS, a current list of citations, and other product specific information.

IP-western blot protocol: https://www.bethyl.com/content/protocol_IP_WB

This document certifies that this product has met all of the quality control standards defined by Bethyl Laboratories, Inc.
Eric McIntush, PhD | Chief Scientific Officer Date: June 21, 2019



Detection of human Desmoplakin by western blot and immunoprecipitation.

Samples: Whole cell lysate from HeLa (15 and 50 μ g for WB; 1 mg for IP, 20% of IP loaded), HEK293T (T; 50 μ g), and Jurkat (J; 50 μ g) cells. *Antibodies:* Affinity purified rabbit anti-Desmoplakin antibody A303-355A used for WB at 0.1 μ g/ml (A) and 1 μ g/ml (B) and used for IP at 6 μ g/mg lysate. Desmoplakin was also immunoprecipitated by rabbit anti-Desmoplakin antibody A303-356A, which recognizes a downstream epitope. *Detection:* Chemiluminescence with exposure times of 10 seconds (A and B).