

POC5 Antibody

Rabbit Polyclonal

Antigen Affinity Purified

Protein ID NP_001092741.1

Catalog No. A303-341A

GeneID 134359

Lot No. A303-341A-2



APPLICATIONS	IP
SPECIES REACTIVITY	Human
AMOUNT	100 µl
CONCENTRATION	1000 µg/ml
STORAGE/SHELF LIFE	2 – 8° C / 1 year from date of receipt
PHYSICAL STATE	Liquid
BUFFER	Tris-citrate/phosphate buffer, pH 7 to 8 containing 0.09% Sodium Azide
ISOTYPE	IgG
ORIGIN	USA
PRODUCTION PROCEDURES	Antibody was affinity purified using an epitope specific to POC5 immobilized on solid support. The epitope recognized by A303-341A maps to a region between residue 525 and 575 of human Protein of Centriole 5 using the numbering given in entry NP_001092741.1 (GeneID 134359).

Antibody concentration was determined by extinction coefficient: absorbance at 280 nm of 1.4 equals 1.0 mg of IgG.

APPLICATIONS Centrifuge tube to remove product from lid. Optimal working dilutions should be determined experimentally by the investigator. Prepare working dilution immediately before use.

Western Blot Not recommended

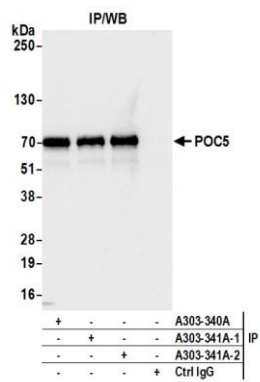
Immunoprecipitation 2 – 10 µg/mg lysate

ADDITIONAL INFO <https://www.bethyl.com/product/A303-341A>

Use the link above to view SDS, a current list of citations, and other product specific information.

IP-western blot protocol: https://www.bethyl.com/content/protocol_IP_WB

This document certifies that this product has met all of the quality control standards defined by Bethyl Laboratories, Inc.
Brian McWilliams, PhD Date: July 28, 2021



Detection of human POC5 by western blot of immunoprecipitates. *Samples:* Whole cell lysate (1.0 mg per IP reaction; 20% of IP loaded) from Jurkat cells prepared using NETN lysis buffer. *Antibodies:* Affinity purified rabbit anti-POC5 antibody (A303-341A lot 2) used for IP at 6 µg per reaction. POC5 was also immunoprecipitated by a previous lot of this antibody (A303-341A lot 1) and a second antibody against a different epitope of POC5 (A303-340A). For blotting immunoprecipitated POC5, A303-341A was used at 0.4 µg/ml. *Detection:* Chemiluminescence with an exposure time of 3 seconds.