

PRRC2C Antibody

Rabbit Polyclonal

Antigen Affinity Purified

Protein ID NP_055987.2

Catalog No. A303-315A

GeneID 23215

Lot No. A303-315A-2



APPLICATIONS	WB, IP
SPECIES REACTIVITY	Human
AMOUNT	100 µl
CONCENTRATION	1000 µg/ml
STORAGE/SHELF LIFE	2 - 8° C / 1 year from date of receipt
PHYSICAL STATE	Liquid
BUFFER	Tris-citrate/phosphate buffer, pH 7 to 8 containing 0.09% Sodium Azide
ISOTYPE	IgG
ORIGIN	USA
PRODUCTION PROCEDURES	Antibody was affinity purified using an epitope specific to PRRC2C immobilized on solid support.

The epitope recognized by A303-315A maps to a region between residue 2250 and 2300 of human Proline-Rch and Coiled-Coil-Containing Protein 2C using the numbering given in entry NP_055987.2 (GeneID 23215).

Antibody concentration was determined by extinction coefficient: absorbance at 280 nm of 1.4 equals 1.0 mg of IgG.

APPLICATIONS Centrifuge tube to remove product from lid. Optimal working dilutions should be determined experimentally by the investigator. Prepare working dilution immediately before use.

Western Blot 1:2,000 - 1:10,000

Immunoprecipitation 2 - 10 µg/mg lysate

APPLICATION NOTES Western blot of immunoprecipitates performed using Normal Pig Serum (Cat. No. S100-020), Goat anti-Rabbit Light Chain HRP Conjugate (Cat. No. A120-113P) and 3-8% SDS-PAGE (link to IP-western blot protocol in Additional Info section below).

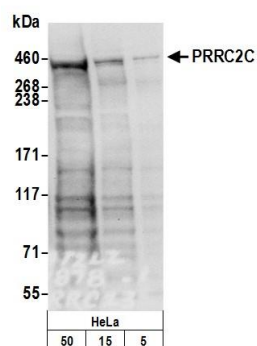
Western blot of lysates performed using standard western blot reagents and 3-8% SDS-PAGE.

ADDITIONAL INFO <https://www.bethyl.com/product/A303-315A>

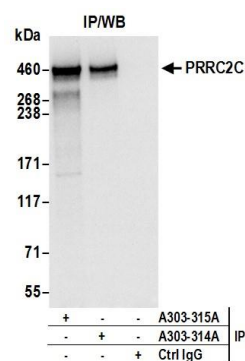
Use the link above to view SDS, a current list of citations, and other product specific information.

IP-western blot protocol: https://www.bethyl.com/content/protocol_IP_WB

This document certifies that this product has met all of the quality control standards defined by Bethyl Laboratories, Inc.
Eric McIntush, PhD | Chief Scientific Officer Date: June 21, 2019



Detection of human PRRC2C by western blot. *Samples:* Whole cell lysate (5, 15 and 50 μ g) from HeLa cells prepared using NETN lysis buffer. *Antibody:* Affinity purified rabbit anti-PRRC2C antibody A303-315A (lot A303-315A-2) used for WB at 0.1 μ g/ml. *Detection:* Chemiluminescence with an exposure time of 10 seconds.



Detection of human PRRC2C by western blot of immunoprecipitates. *Samples:* Whole cell lysate (0.5 or 1.0 mg per IP reaction; 20% of IP loaded) from HeLa cells prepared using NETN lysis buffer. *Antibodies:* Affinity purified rabbit anti-PRRC2C antibody A303-315A (lot A303-315A-2) used for IP at 6 μ g per reaction. PRRC2C was also immunoprecipitated by rabbit anti-PRRC2C antibody A303-314A. For blotting immunoprecipitated PRRC2C, A303-315A was used at 1 μ g/ml. *Detection:* Chemiluminescence with an exposure time of 10 seconds.