

STAM1 Antibody

Rabbit Polyclonal

Antigen Affinity Purified

Protein ID NP_003464.1

Catalog No. A303-292A

GeneID 8027

Lot No. A303-292A-1



APPLICATIONS	WB, IP
SPECIES REACTIVITY	Human
AMOUNT	100 µl
CONCENTRATION	200 µg/ml
STORAGE/SHELF LIFE	2 – 8° C / 1 year from date of receipt
PHYSICAL STATE	Liquid
BUFFER	Tris-buffered Saline containing 0.1% BSA and 0.09% Sodium Azide
ISOTYPE	IgG
ORIGIN	USA
PRODUCTION PROCEDURES	Antibody was affinity purified using an epitope specific to STAM1 immobilized on solid support.

The epitope recognized by A303-292A maps to a region between residue 300 and 350 of human Signal Transducing Adaptor Molecule (SH3 domain and ITAM motif) 1 using the numbering given in entry NP_003464.1 (GeneID 8027).

Antibody concentration was determined by extinction coefficient: absorbance at 280 nm of 1.4 equals 1.0 mg of IgG.

APPLICATIONS Centrifuge tube to remove product from lid. Optimal working dilutions should be determined experimentally by the investigator. Prepare working dilution immediately before use.

Western Blot 1:2,000 – 1:10,000

Immunoprecipitation 2 – 10 µg/mg lysate

APPLICATION NOTES Western blot of immunoprecipitates performed using Normal Pig Serum (Cat. No. S100-020), Goat anti-Rabbit Light Chain HRP Conjugate (Cat. No. A120-113P) and 4-20% SDS-PAGE (link to IP-western blot protocol in Additional Info section below).

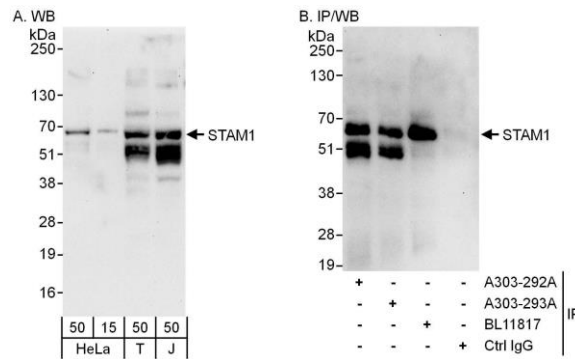
Western blot of lysates performed using standard western blot reagents and 4-20% SDS-PAGE.

ADDITIONAL INFO <https://www.bethyl.com/product/A303-292A>

Use the link above to view SDS, a current list of citations, and other product specific information.

IP-western blot protocol: https://www.bethyl.com/content/protocol_IP_WB

This document certifies that this product has met all of the quality control standards defined by Bethyl Laboratories, Inc.
Eric McIntush, PhD | Chief Scientific Officer Date: June 21, 2019



Detection of human STAM1 by western blot and immunoprecipitation. *Samples:* Whole cell lysate from HeLa (15 and 50 μg for WB; 1 mg for IP, 20% of IP loaded), HEK293T (T; 50 μg) and Jurkat (J; 50 μg) cells. *Antibodies:* Affinity purified rabbit anti-STAM1 antibody A303-292A used for WB at 0.04 $\mu\text{g}/\text{ml}$ (A) and 1 $\mu\text{g}/\text{ml}$ (B) and used for IP at 6 $\mu\text{g}/\text{mg}$ lysate. STAM1 was also immunoprecipitated by rabbit anti-STAM1 antibodies A303-293A and BL11817, which recognize downstream epitopes. *Detection:* Chemiluminescence with exposure times of 30 seconds (A) and 10 seconds (B).