

ZNF324 Antibody

Rabbit Polyclonal

Antigen Affinity Purified

Protein ID NP_055162.1

Catalog No. A303-256A

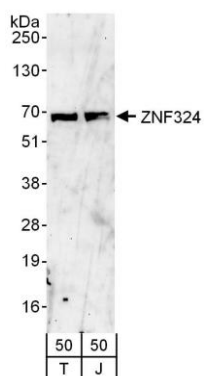
GeneID 25799

Lot No. A303-256A-1



APPLICATIONS	WB				
SPECIES REACTIVITY	Human				
AMOUNT	100 µl				
CONCENTRATION	1000 µg/ml				
STORAGE/SHELF LIFE	2 - 8° C / 1 year from date of receipt				
PHYSICAL STATE	Liquid				
BUFFER	Tris-citrate/phosphate buffer, pH 7 to 8 containing 0.09% Sodium Azide				
ISOTYPE	IgG				
ORIGIN	USA				
PRODUCTION PROCEDURES	<p>Antibody was affinity purified using an epitope specific to ZNF324 immobilized on solid support.</p> <p>The epitope recognized by A303-256A maps to a region between residue 503 and 553 of human Zinc Finger Protein 324 using the numbering given in entry NP_055162.1 (GeneID 25799).</p> <p>Antibody concentration was determined by extinction coefficient: absorbance at 280 nm of 1.4 equals 1.0 mg of IgG.</p>				
APPLICATIONS	<p>Centrifuge tube to remove product from lid. Optimal working dilutions should be determined experimentally by the investigator. Prepare working dilution immediately before use.</p> <table><tr><td>Western Blot</td><td>1:1,000 - 1:5,000</td></tr><tr><td>Immunoprecipitation</td><td>Not recommended</td></tr></table>	Western Blot	1:1,000 - 1:5,000	Immunoprecipitation	Not recommended
Western Blot	1:1,000 - 1:5,000				
Immunoprecipitation	Not recommended				
APPLICATION NOTES	Western blot of lysates performed using standard western blot reagents and 4-20% SDS-PAGE.				
ADDITIONAL INFO	<p>https://www.bethyl.com/product/A303-256A</p> <p>Use the link above to view SDS, a current list of citations, and other product specific information.</p>				

This document certifies that this product has met all of the quality control standards defined by Bethyl Laboratories, Inc.
Eric McIntush, PhD | Chief Scientific Officer Date: June 21, 2019



Detection of human ZNF324 by western blot. *Samples:* Whole cell lysate from HEK293T (T; 50 µg) and Jurkat (J; 50 µg) cells. *Antibodies:* Affinity purified rabbit anti-ZNF324 antibody A303-256A used for WB at 0.4 µg/ml. *Detection:* Chemiluminescence with an exposure time of 3 minutes.