

YB1 Antibody

Rabbit Polyclonal

Antigen Affinity Purified

Protein ID NP_004550.2

Catalog No. A303-230A

GeneID 4904

Lot No. A303-230A-2



APPLICATIONS	WB, IP, IHC
SPECIES REACTIVITY	Human, Mouse
PRESUMED REACTIVITY	Based on 100% sequence identity, this antibody is predicted to react with Rat, X. laevis, Chicken, Bovine and Rabbit
AMOUNT	100 µl
CONCENTRATION	1000 µg/ml
STORAGE/SHELF LIFE	2 - 8° C / 1 year from date of receipt
PHYSICAL STATE	Liquid
BUFFER	Tris-citrate/phosphate buffer, pH 7 to 8 containing 0.09% Sodium Azide
ISOTYPE	IgG
ORIGIN	USA
PRODUCTION PROCEDURES	Antibody was affinity purified using an epitope specific to YB1 immobilized on solid support.

The epitope recognized by A303-230A maps to a region between residue 224 and 274 of human Y Box Binding Protein 1 using the numbering given in entry NP_004550. (GeneID 4904).

Antibody concentration was determined by extinction coefficient: absorbance at 280 nm of 1.4 equals 1.0 mg of IgG.

APPLICATIONS Centrifuge tube to remove product from lid. Optimal working dilutions should be determined experimentally by the investigator. Prepare working dilution immediately before use.

Western Blot 1:2,000 – 1:10,000

Immunoprecipitation 2 – 10 µg/mg lysate

Immunohistochemistry 1:1,000 to 1:5,000. Epitope retrieval with citrate buffer pH6.0 is recommended for FFPE tissue sections.

APPLICATION NOTES Western blot of immunoprecipitates performed using Normal Pig Serum (Cat. No. S100-020), Goat anti-Rabbit Light Chain HRP Conjugate (Cat. No. A120-113P) and 4-20% SDS-PAGE (link to IP-western blot protocol in Additional Info section below).

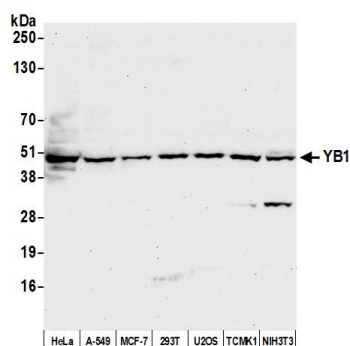
IHC HUMAN CONTROLS Western blot of lysates performed using standard western blot reagents and 4-20% SDS-PAGE. Breast Carcinoma, Colon Carcinoma, Linitis Plastica Stomach Cancer, Ovarian Carcinoma

IHC MOUSE CONTROLS Renal Cell Carcinoma, Teratoma

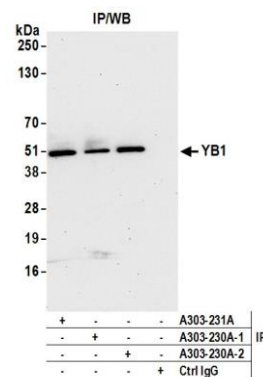
ADDITIONAL INFO <https://www.bethyl.com/product/A303-230A>

Use the link above to view SDS, a current list of citations, and other product specific information. IP-western blot protocol https://www.bethyl.com/content/protocol_IP_WB

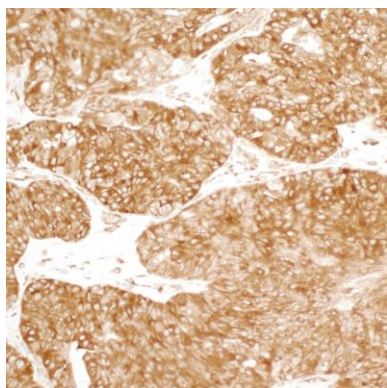
This document certifies that this product has met all of the quality control standards defined by Bethyl Laboratories, Inc.
Eric McIntush, PhD | Chief Scientific Officer Date: September 6, 2019



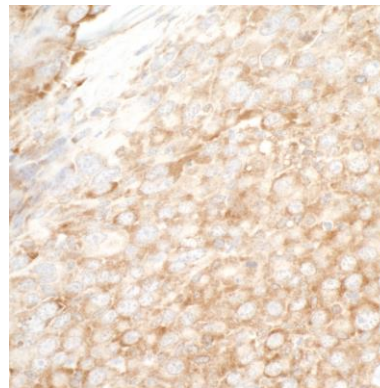
Detection of human and mouse YB1 by western blot.
Samples: Whole cell lysate (50 µg) from HeLa, A-549, MCF-7, HEK293T, U2OS, TCMK-1, and NIH 3T3 cells prepared using NETN lysis buffer. *Antibody:* Affinity purified rabbit anti-YB1 antibody A303-230A (lot A303-230A-2) used for WB at 0.1 µg/ml. *Detection:* Chemiluminescence with an exposure time of 30 seconds.



Detection of human YB1 by western blot of immunoprecipitates. *Samples:* Whole cell lysate (1.0 mg per IP reaction; 20% of IP loaded) from HeLa cells prepared using NETN lysis buffer. *Antibodies:* Affinity purified rabbit anti-YB1 antibody A303-230A (lot A303-230A-2) used for IP at 6 µg per reaction. YB1 was also immunoprecipitated by a previous lot of this antibody (lot A303-230A-1) and rabbit anti-YB1 antibody A303-231A. For blotting immunoprecipitated YB1, A303-230A was used at 0.1 µg/ml. *Detection:* Chemiluminescence with an exposure time of 30 seconds.



Detection of human YB1 by immunohistochemistry.
Samples: FFPE sections of human ovarian carcinoma.
Antibody: Affinity purified rabbit anti-YB1 (Cat. No. A303-230A lot 2) used at a dilution of 1:5,000 (0.2µg/ml).
Detection: DAB



Detection of mouse YB1 by immunohistochemistry.
Sample: FFPE section of mouse renal cell carcinoma.
Antibody: Affinity purified rabbit anti-YB1 (Cat. No. A303-230A lot 2) used at a dilution of 1:5,000 (0.2µg/ml).
Detection: DAB