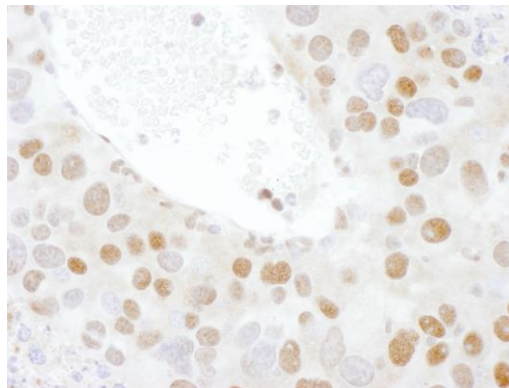


Detection of human and mouse TDP43 by western blot (h and m) and immunoprecipitation (h). *Samples:* Whole cell lysate from HeLa (15 and 50 μ g for WB; 1 mg for IP, 20% of IP loaded), HEK293T (T; 50 μ g), Jurkat (J; 50 μ g) and mouse NIH 3T3 (M; 50 μ g) cells. *Antibodies:* Affinity purified rabbit anti-TDP43 antibody A303-224A used for WB at 0.04 μ g/ml (A) and 0.4 μ g/ml (B) and used for IP at 6 μ g/mg lysate. TDP43 was also immunoprecipitated by rabbit anti-TDP43 antibody A303-223A, which recognizes an upstream epitope. *Detection:* Chemiluminescence with exposure times of 30 seconds (A) and 3 seconds (B).

Detection of human TDP43 by immunohistochemistry. *Sample:* FFPE section of human breast carcinoma. *Antibody:* Affinity purified rabbit anti-TDP43 (Cat. No. A303-224A Lot1) used at a dilution of 1:1,000 (0.2 μ g/ml). *Detection:* DAB



Detection of mouse TDP43 by immunohistochemistry. *Sample:* FFPE section of mouse renal cell carcinoma. *Antibody:* Affinity purified rabbit anti-TDP43 (Cat. No. A303-224A Lot1) used at a dilution of 1:200 (1 μ g/ml). *Detection:* DAB