

# SIX4 Antibody

Rabbit Polyclonal

Antigen Affinity Purified

Protein ID NP\_059116.3

Catalog No. A303-219A

GeneID 51804

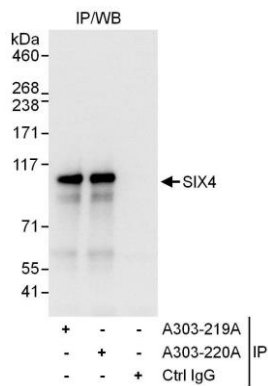
Lot No. A303-219A-1



APPLICATIONS	IP
SPECIES REACTIVITY	Human
AMOUNT	100 µl
CONCENTRATION	1000 µg/ml
STORAGE/SHELF LIFE	2 – 8° C / 1 year from date of receipt
PHYSICAL STATE	Liquid
BUFFER	Tris-citrate/phosphate buffer, pH 7 to 8 containing 0.09% Sodium Azide
ISOTYPE	IgG
ORIGIN	USA
PRODUCTION PROCEDURES	<p>Antibody was affinity purified using an epitope specific to SIX4 immobilized on solid support.</p> <p>The epitope recognized by A303-219A maps to a region between residue 550 and 600 of human Sine Oculis Homeobox Homolog 4 using the numbering given in entry NP_059116.3 (GeneID 51804).</p> <p>Antibody concentration was determined by extinction coefficient: absorbance at 280 nm of 1.4 equals 1.0 mg of IgG.</p>
APPLICATIONS	<p>Centrifuge tube to remove product from lid. Optimal working dilutions should be determined experimentally by the investigator. Prepare working dilution immediately before use.</p> <p>Western Blot                      Not recommended</p> <p>Immunoprecipitation        2 – 10 µg/mg lysate</p>
APPLICATION NOTES	Western blot of immunoprecipitates performed using Normal Pig Serum (Cat. No. S100-020), Goat anti-Rabbit Light Chain HRP Conjugate (Cat. No. A120-113P) and 4-8% SDS-PAGE (link to IP-western blot protocol in Additional Info section below).
ADDITIONAL INFO	<p><a href="https://www.bethyl.com/product/A303-219A">https://www.bethyl.com/product/A303-219A</a></p> <p>Use the link above to view SDS, a current list of citations, and other product specific information.</p> <p>IP-western blot protocol: <a href="https://www.bethyl.com/content/protocol_IP_WB">https://www.bethyl.com/content/protocol_IP_WB</a></p>

This document certifies that this product has met all of the quality control standards defined by Bethyl Laboratories, Inc.  
Eric McIntush, PhD | Chief Scientific Officer

Date: June 21, 2019



**Detection of human SIX4 by western blot of immunoprecipitates.** *Samples:* Whole cell lysate (1 mg for IP, 20% of IP loaded) from HeLa cells. *Antibodies:* Affinity purified rabbit anti-SIX4 antibody A303-219A used for IP at 6 µg/mg lysate. SIX4 was also immunoprecipitated by rabbit anti-SIX4 antibody A303-220A, which recognizes a downstream epitope. For blotting immunoprecipitated SIX4, A303-220A was used at 0.4 µg/ml. *Detection:* Chemiluminescence with an exposure time of 3 seconds.