

SFRS17A Antibody

Rabbit Polyclonal

Antigen Affinity Purified

Protein ID NP_005079.2

Catalog No. A303-218A

GeneID 8227

Lot No. A303-218A-1



APPLICATIONS	WB, IP
SPECIES REACTIVITY	Human
AMOUNT	100 µl
CONCENTRATION	1000 µg/ml
STORAGE/SHELF LIFE	2 – 8° C / 1 year from date of receipt
PHYSICAL STATE	Liquid
BUFFER	Tris-citrate/phosphate buffer, pH 7 to 8 containing 0.09% Sodium Azide
ISOTYPE	IgG
ORIGIN	USA
PRODUCTION PROCEDURES	Antibody was affinity purified using an epitope specific to SFRS17A immobilized on solid support.

The epitope recognized by A303-218A maps to a region between residue 575 and 625 of human Splicing Factor, Arginine/Serine-Rich 17A using the numbering given in entry NP_005079.2 (GeneID 8227).

Antibody concentration was determined by extinction coefficient: absorbance at 280 nm of 1.4 equals 1.0 mg of IgG.

APPLICATIONS Centrifuge tube to remove product from lid. Optimal working dilutions should be determined experimentally by the investigator. Prepare working dilution immediately before use.

Western Blot 1:1,000 – 1:5,000

Immunoprecipitation 2 – 10 µg/mg lysate

APPLICATION NOTES Western blot of immunoprecipitates performed using Normal Pig Serum (Cat. No. S100-020), Goat anti-Rabbit Light Chain HRP Conjugate (Cat. No. A120-113P) and 4-8% SDS-PAGE (link to IP-western blot protocol in Additional Info section below).

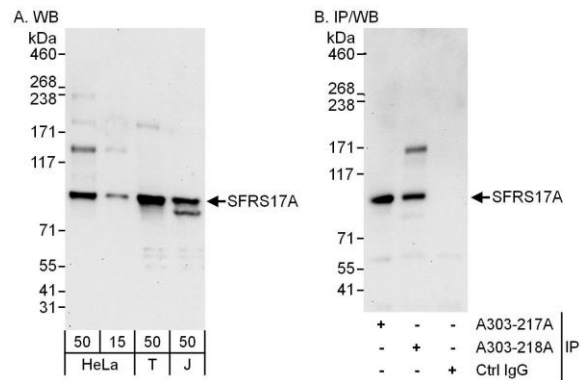
Western blot of lysates performed using standard western blot reagents and 4-8% SDS-PAGE.

ADDITIONAL INFO <https://www.bethyl.com/product/A303-218A>

Use the link above to view SDS, a current list of citations, and other product specific information.

IP-western blot protocol: https://www.bethyl.com/content/protocol_IP_WB

This document certifies that this product has met all of the quality control standards defined by Bethyl Laboratories, Inc.
Eric McIntush, PhD | Chief Scientific Officer Date: June 21, 2019



Detection of human SFRS17A by western blot and immunoprecipitation. *Samples:* Whole cell lysate from HeLa (15 and 50 μ g for WB; 1 mg for IP, 20% of IP loaded), HEK293T (T; 50 μ g) and Jurkat (J; 50 μ g) cells. *Antibodies:* Affinity purified rabbit anti-SFRS17A antibody A303-218A used for WB at 0.4 μ g/ml (A) and 1 μ g/ml (B) and used for IP at 6 μ g/mg lysate. SFRS17A was also immunoprecipitated by rabbit anti-SFRS17A antibody A303-217A, which recognizes an upstream epitope. *Detection:* Chemiluminescence with exposure times of 30 seconds (A and B).