

MSI2 Antibody

Rabbit Polyclonal

Antigen Affinity Purified

Protein ID NP_620412.1

Catalog No. A303-216A

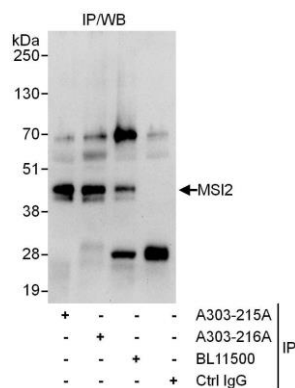
GeneID 124540

Lot No. A303-216A-1



| | | | | | |
|------------------------------|--|--------------|--|---------------------|---------------------|
| APPLICATIONS | IP | | | | |
| SPECIES REACTIVITY | Human | | | | |
| AMOUNT | 100 µl | | | | |
| CONCENTRATION | 1000 µg/ml | | | | |
| STORAGE/SHELF LIFE | 2 – 8° C / 1 year from date of receipt | | | | |
| PHYSICAL STATE | Liquid | | | | |
| BUFFER | Tris-citrate/phosphate buffer, pH 7 to 8 containing 0.09% Sodium Azide | | | | |
| ISOTYPE | IgG | | | | |
| ORIGIN | USA | | | | |
| PRODUCTION PROCEDURES | <p>Antibody was affinity purified using an epitope specific to MSI2 immobilized on solid support.</p> <p>The epitope recognized by A303-216A maps to a region between residue 250 and 300 of human Musashi Homolog 2 using the numbering given in entry NP_620412.1 (GeneID 124540).</p> <p>Antibody concentration was determined by extinction coefficient: absorbance at 280 nm of 1.4 equals 1.0 mg of IgG.</p> | | | | |
| APPLICATIONS | <p>Centrifuge tube to remove product from lid. Optimal working dilutions should be determined experimentally by the investigator. Prepare working dilution immediately before use.</p> <table><tr><td>Western Blot</td><td>Not recommended. A303-216A has not performed satisfactorily when used for WB of MSI2 in crude preparations (e.g. whole cell lysate). This antibody can be used for WB of enriched (e.g. immunoprecipitated) sources of MSI2.</td></tr><tr><td>Immunoprecipitation</td><td>2 – 10 µg/mg lysate</td></tr></table> | Western Blot | Not recommended. A303-216A has not performed satisfactorily when used for WB of MSI2 in crude preparations (e.g. whole cell lysate). This antibody can be used for WB of enriched (e.g. immunoprecipitated) sources of MSI2. | Immunoprecipitation | 2 – 10 µg/mg lysate |
| Western Blot | Not recommended. A303-216A has not performed satisfactorily when used for WB of MSI2 in crude preparations (e.g. whole cell lysate). This antibody can be used for WB of enriched (e.g. immunoprecipitated) sources of MSI2. | | | | |
| Immunoprecipitation | 2 – 10 µg/mg lysate | | | | |
| APPLICATION NOTES | Western blot of immunoprecipitates performed using Normal Pig Serum (Cat. No. S100-020), Goat anti-Rabbit Light Chain HRP Conjugate (Cat. No. A120-113P) and 4-20% SDS-PAGE (link to IP-western blot protocol in Additional Info section below). | | | | |
| ADDITIONAL INFO | <p>https://www.bethyl.com/product/A303-216A</p> <p>Use the link above to view SDS, a current list of citations, and other product specific information. IP-western blot protocol: https://www.bethyl.com/content/protocol_IP_WB</p> | | | | |

This document certifies that this product has met all of the quality control standards defined by Bethyl Laboratories, Inc.
Eric McIntush, PhD | Chief Scientific Officer Date: June 21, 2019



Detection of human MSI2 by western blot of immunoprecipitates. *Samples:* Whole cell lysate (1 mg for IP, 20% of IP loaded) from HeLa cells. *Antibodies:* Affinity purified rabbit anti-MSI2 antibody A303-216A used for IP at 6 $\mu\text{g}/\text{mg}$ lysate. MSI2 was also immunoprecipitated by rabbit anti-MSI2 antibodies A303-215A and BL11500, which recognize other epitopes. For blotting immunoprecipitated MSI2, A303-216A was used at 1 $\mu\text{g}/\text{ml}$. *Detection:* Chemiluminescence with an exposure time of 30 seconds.