

SALL2 Antibody

Rabbit Polyclonal

Antigen Affinity Purified

Protein ID NP_005398.1

Catalog No. A303-208A

GeneID 6297

Lot No. A303-208A-1



| | |
|------------------------------|-------------------------------------------------------------------------------------------------|
| APPLICATIONS | WB, IP |
| SPECIES REACTIVITY | Human |
| AMOUNT | 100 µl |
| CONCENTRATION | 1000 µg/ml |
| STORAGE/SHELF LIFE | 2 - 8° C / 1 year from date of receipt |
| PHYSICAL STATE | Liquid |
| BUFFER | Tris-citrate/phosphate buffer, pH 7 to 8 containing 0.09% Sodium Azide |
| ISOTYPE | IgG |
| ORIGIN | USA |
| PRODUCTION PROCEDURES | Antibody was affinity purified using an epitope specific to SALL2 immobilized on solid support. |

The epitope recognized by A303-208A maps to a region between residue 957 and 1007 of human Sal-like 2 using the numbering given in entry NP_005398.1 (GeneID 6297).

Antibody concentration was determined by extinction coefficient: absorbance at 280 nm of 1.4 equals 1.0 mg of IgG.

APPLICATIONS Centrifuge tube to remove product from lid. Optimal working dilutions should be determined experimentally by the investigator. Prepare working dilution immediately before use.

Western Blot 1:1,000 - 1:5,000

Immunoprecipitation 2 - 10 µg/mg lysate

APPLICATION NOTES Western blot of immunoprecipitates performed using Normal Pig Serum (Cat. No. S100-020), Goat anti-Rabbit Light Chain HRP Conjugate (Cat. No. A120-113P) and 4-8% SDS-PAGE (link to IP-western blot protocol in Additional Info section below).

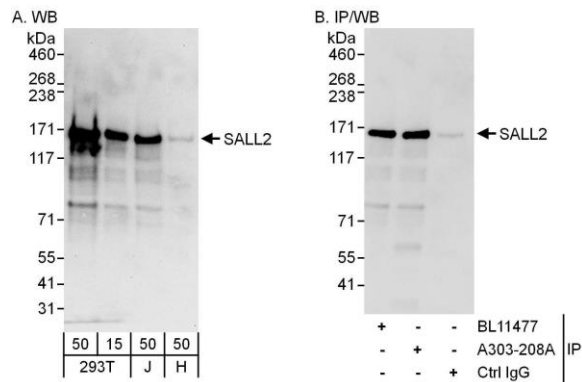
Western blot of lysates performed using standard western blot reagents and 4-8% SDS-PAGE.

ADDITIONAL INFO <https://www.bethyl.com/product/A303-208A>

Use the link above to view SDS, a current list of citations, and other product specific information.

IP-western blot protocol: https://www.bethyl.com/content/protocol_IP_WB

This document certifies that this product has met all of the quality control standards defined by Bethyl Laboratories, Inc.
Eric McIntush, PhD | Chief Scientific Officer Date: June 21, 2019



Detection of human SALL2 by western blot and immunoprecipitation. *Samples:* Whole cell lysate from HEK293T (15 and 50 μ g for WB; 1 mg for IP, 20% of IP loaded), Jurkat (J; 50 μ g) and HeLa (H; 50 μ g) cells. *Antibodies:* Affinity purified rabbit anti-SALL2 antibody A303-208A used for WB at 0.4 μ g/ml (A) and 1 μ g/ml (B) and used for IP at 6 μ g/mg lysate. SALL2 was also immunoprecipitated by rabbit anti-SALL2 antibody BL11477, which recognizes an upstream epitope. *Detection:* Chemiluminescence with exposure times of 10 seconds (A) and 3 seconds (B).