

HDGF Antibody

Rabbit Polyclonal

Antigen Affinity Purified

Protein ID NP_004485.1

Catalog No. A303-170A

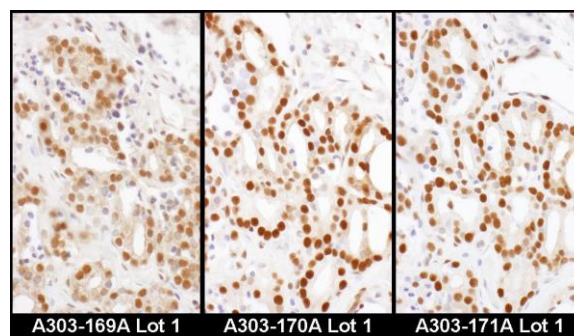
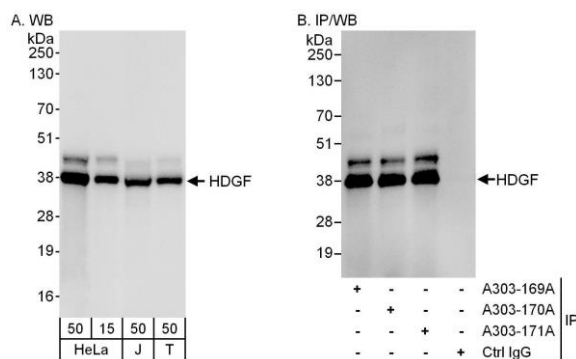
GeneID 3068

Lot No. A303-170A-1



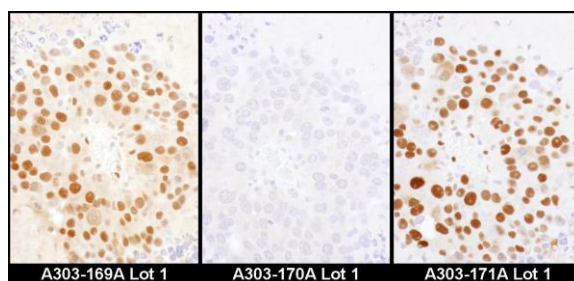
APPLICATIONS	WB, IP, IHC
SPECIES REACTIVITY	Human
AMOUNT	100 µl
CONCENTRATION	200 µg/ml
STORAGE/SHELF LIFE	2 – 8° C / 1 year from date of receipt
PHYSICAL STATE	Liquid
BUFFER	Tris-buffered Saline containing 0.1% BSA and 0.09% Sodium Azide
ISOTYPE	IgG
ORIGIN	USA
PRODUCTION PROCEDURES	<p>Antibody was affinity purified using an epitope specific to HDGF immobilized on solid support.</p> <p>The epitope recognized by A303-170A maps to a region between residue 150 and 200 of human Hepatoma-Derived Growth Factor using the numbering given in entry NP_004485.1 (GeneID 3068).</p> <p>Antibody concentration was determined by extinction coefficient: absorbance at 280 nm of 1.4 equals 1.0 mg of IgG.</p>
APPLICATIONS	<p>Centrifuge tube to remove product from lid. Optimal working dilutions should be determined experimentally by the investigator. Prepare working dilution immediately before use.</p> <p>Western Blot 1:2,000 – 1:10,000</p> <p>Immunoprecipitation 2 – 10 µg/mg lysate</p> <p>Immunohistochemistry 1:200 – 1:1,000. Epitope retrieval with citrate buffer pH 6.0 is recommended for FFPE tissue sections.</p>
APPLICATION NOTES	<p>Western blot of immunoprecipitates performed using Normal Pig Serum (Cat. No. S100-020), Goat anti-Rabbit Light Chain HRP Conjugate (Cat. No. A120-113P) and 4-20% SDS-PAGE (link to IP-western blot protocol in Additional Info section below).</p> <p>Western blot of lysates performed using standard western blot reagents and 4-20% SDS-PAGE.</p>
IHC HUMAN CONTROLS	Breast Carcinoma, Ovarian Carcinoma, Stomach Adenocarcinoma, Testicular Seminoma
ADDITIONAL INFO	<p>https://www.bethyl.com/product/A303-170A</p> <p>Use the link above to view SDS, a current list of citations, and other product specific information.</p> <p>IP-western blot protocol: https://www.bethyl.com/content/protocol_IP_WB</p>

This document certifies that this product has met all of the quality control standards defined by Bethyl Laboratories, Inc.
Eric McIntush, PhD | Chief Scientific Officer Date: June 21, 2019



Detection of human HDGF by western blot and immunoprecipitation. *Samples:* Whole cell lysate from HeLa (15 and 50 µg for WB; 1 mg for IP, 20% of IP loaded), Jurkat (J; 50 µg) and HEK293T (T; 50 µg) cells. *Antibodies:* Affinity purified rabbit anti-HDGF antibody A303-170A used for WB at 0.04 µg/ml (A) and 1 µg/ml (B) and used for IP at 6 µg/mg lysate. HDGF was also immunoprecipitated by rabbit anti-HDGF antibodies A303-169A and A303-171A, which recognize other epitopes. *Detection:* Chemiluminescence with exposure times of 3 seconds (A) and 1 second (B).

Detection of human HDGF by immunohistochemistry. *Samples:* FFPE serial sections of human breast carcinoma. *Antibody:* Affinity purified rabbit anti-HDGF (Cat. No. A303-169A Lot1, left image, A303-170A Lot1, middle image and Cat. No. A303-171A Lot1, right image) used at a dilution of 1:1,000 (1 µg/ml) or 1:200 (1 µg/ml). *Detection:* DAB. *Counterstain:* Hematoxylin (blue).



Detection of mouse HDGF by immunohistochemistry. *Samples:* FFPE serial sections of mouse renal cell carcinoma. *Antibody:* Affinity purified rabbit anti-HDGF (Cat. No. A303-169A Lot1, left image, A303-170A Lot1, middle image and Cat. No. A303-171A Lot1, right image) used at a dilution of 1:1,000 (1 µg/ml) or 1:200 (1 µg/ml). *Detection:* DAB