

GCFC1 Antibody

Rabbit Polyclonal

Antigen Affinity Purified

Protein ID NP_057715.2

Catalog No. A303-167A

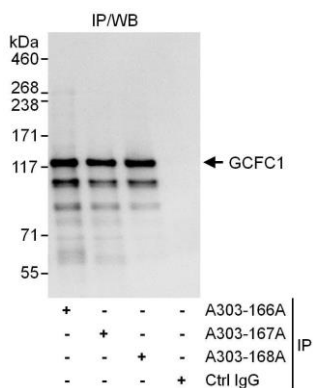
GeneID 94104

Lot No. A303-167A-1



| | | | | | |
|------------------------------|--|--------------|-----------------|---------------------|---------------------|
| APPLICATIONS | IP | | | | |
| SPECIES REACTIVITY | Human | | | | |
| PRESUMED REACTIVITY | Based on 100% sequence identity, this antibody is predicted to react with Mouse | | | | |
| AMOUNT | 100 µl | | | | |
| CONCENTRATION | 1000 µg/ml | | | | |
| STORAGE/SHELF LIFE | 2 – 8° C / 1 year from date of receipt | | | | |
| PHYSICAL STATE | Liquid | | | | |
| BUFFER | Tris-citrate/phosphate buffer, pH 7 to 8 containing 0.09% Sodium Azide | | | | |
| ISOTYPE | IgG | | | | |
| ORIGIN | USA | | | | |
| PRODUCTION PROCEDURES | <p>Antibody was affinity purified using an epitope specific to GCFC1 immobilized on solid support.</p> <p>The epitope recognized by A303-167A maps to a region between residue 275 and 325 of human GC-rich Sequence DNA-binding Factor 1 using the numbering given in entry NP_057715.2 (GeneID 94104).</p> <p>Antibody concentration was determined by extinction coefficient: absorbance at 280 nm of 1.4 equals 1.0 mg of IgG.</p> | | | | |
| APPLICATIONS | <p>Centrifuge tube to remove product from lid. Optimal working dilutions should be determined experimentally by the investigator. Prepare working dilution immediately before use.</p> <table><tr><td>Western Blot</td><td>Not recommended</td></tr><tr><td>Immunoprecipitation</td><td>2 – 10 µg/mg lysate</td></tr></table> | Western Blot | Not recommended | Immunoprecipitation | 2 – 10 µg/mg lysate |
| Western Blot | Not recommended | | | | |
| Immunoprecipitation | 2 – 10 µg/mg lysate | | | | |
| APPLICATION NOTES | Western blot of immunoprecipitates performed using Normal Pig Serum (Cat. No. S100-020), Goat anti-Rabbit Light Chain HRP Conjugate (Cat. No. A120-113P) and 4-8% SDS-PAGE (link to IP-western blot protocol in Additional Info section below). | | | | |
| ADDITIONAL INFO | <p>https://www.bethyl.com/product/A303-167A</p> <p>Use the link above to view SDS, a current list of citations, and other product specific information. IP-western blot protocol: https://www.bethyl.com/content/protocol_IP_WB</p> | | | | |

This document certifies that this product has met all of the quality control standards defined by Bethyl Laboratories, Inc.
Eric McIntush, PhD | Chief Scientific Officer Date: June 21, 2019



Detection of human GCFC1 by western blot of immunoprecipitates. *Samples:* Whole cell lysate (1 mg for IP, 20% of IP loaded) from HeLa cells. *Antibodies:* Affinity purified rabbit anti-GCFC1 antibody A303-167A used for IP at 6 $\mu\text{g}/\text{mg}$ lysate. GCFC1 was also immunoprecipitated by rabbit anti-GCFC1 antibodies A303-166A and A303-168A, which recognize other epitopes. For blotting immunoprecipitated GCFC1, A303-167A was used at 1 $\mu\text{g}/\text{ml}$. *Detection:* Chemiluminescence with an exposure time of 3 seconds.