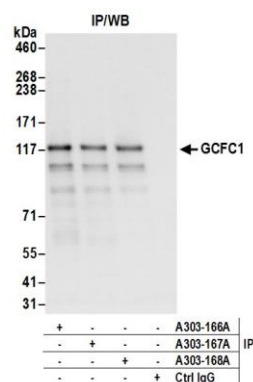


**Detection of human GCFC1 by western blot.** *Samples:* Whole cell lysate ( 15 µg) from HeLa, HEK293T, and Jurkat cells prepared using NETN lysis buffer. *Antibody:* Affinity purified rabbit anti-GCFC1 antibody A303-166A (lot A303-166A-1) used for WB at 0.04 µg/ml. *Detection:* Chemiluminescence with an exposure time of 30 seconds.



**Detection of human GCFC1 by western blot of immunoprecipitates.** *Samples:* Whole cell lysate (0.5 or 1.0 mg per IP reaction; 20% of IP loaded) from HeLa cells prepared using NETN lysis buffer. *Antibodies:* Affinity purified rabbit anti-GCFC1 antibody A303-166A (lot A303-166A-1) used for IP at 6 µg per reaction. GCFC1 was also immunoprecipitated by rabbit anti-GCFC1 antibodies A303-167A and A300-168A. For blotting immunoprecipitated GCFC1, A303-166A was used at 1 µg/ml. *Detection:* Chemiluminescence with an exposure time of 3 seconds.