

C/EBP zeta Antibody

Rabbit Polyclonal

Antigen Affinity Purified

Protein ID NP_005751.2

Catalog No. A303-155A

GeneID 10153

Lot No. A303-155A-1



APPLICATIONS WB, IP

SPECIES REACTIVITY Human

AMOUNT 100 µl

CONCENTRATION 200 µg/ml

STORAGE/SHELF LIFE 2 - 8° C / 1 year from date of receipt

PHYSICAL STATE Liquid

BUFFER Tris-buffered Saline containing 0.1% BSA and 0.09% Sodium Azide

ISOTYPE IgG

ORIGIN USA

PRODUCTION PROCEDURES Antibody was affinity purified using an epitope specific to C/EBP zeta immobilized on solid support.

The epitope recognized by A303-155A maps to a region between residue 925 and 975 of human CCAAT/Enhancer Binding Protein (C/EBP) zeta using the numbering given in entry NP_005751.2 (GeneID 10153).

Antibody concentration was determined by extinction coefficient: absorbance at 280 nm of 1.4 equals 1.0 mg of IgG.

APPLICATIONS Centrifuge tube to remove product from lid. Optimal working dilutions should be determined experimentally by the investigator. Prepare working dilution immediately before use.

Western Blot 1:2,000 - 1:10,000

Immunoprecipitation 2 - 10 µg/mg lysate

APPLICATION NOTES Western blot of immunoprecipitates performed using Normal Pig Serum (Cat. No. S100-020), Goat anti-Rabbit Light Chain HRP Conjugate (Cat. No. A120-113P) and 4-8% SDS-PAGE (link to IP-western blot protocol in Additional Info section below).

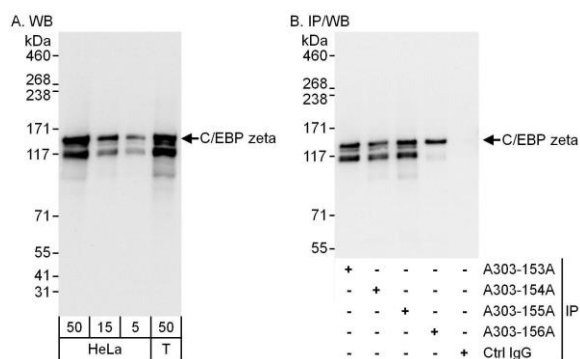
Western blot of lysates performed using standard western blot reagents and 4-8% SDS-PAGE.

ADDITIONAL INFO <https://www.bethyl.com/product/A303-155A>

Use the link above to view SDS, a current list of citations, and other product specific information.

IP-western blot protocol: https://www.bethyl.com/content/protocol_IP_WB

This document certifies that this product has met all of the quality control standards defined by Bethyl Laboratories, Inc.
Eric McIntush, PhD | Chief Scientific Officer Date: June 21, 2019



Detection of human C/EBP zeta by western blot and immunoprecipitation. *Samples:* Whole cell lysate from HeLa (5, 15 and 50 μ g for WB; 1 mg for IP, 20% of IP loaded) and HEK293T (T; 50 μ g) cells. *Antibodies:* Affinity purified rabbit anti-C/EBP zeta antibody A303-155A used for WB at 0.04 μ g/ml (A) and 1 μ g/ml (B) and used for IP at 6 μ g/mg lysate. C/EBP zeta was also immunoprecipitated by rabbit anti-C/EBP zeta antibodies A303-153A, A303-154A and A303-156A, which recognize other epitopes. *Detection:* Chemiluminescence with exposure times of 10 seconds (A) and 3 seconds (B).