

14-3-3 theta Antibody

Rabbit Polyclonal

Antigen Affinity Purified Protein ID NP_006817.1
Catalog No. A303-146A GeneID 10971
Lot No. A303-146A-1



APPLICATIONS	WB, IP, IHC
SPECIES REACTIVITY	Human, Mouse
PRESUMED REACTIVITY	Based on 100% sequence identity, this antibody is predicted to react with Rat, X. laevis, Chicken, Bovine, Rabbit and Orangutan
AMOUNT	100 µl
CONCENTRATION	1000 µg/ml
STORAGE/SHELF LIFE	2 - 8° C / 1 year from date of receipt
PHYSICAL STATE	Liquid
BUFFER	Tris-citrate/phosphate buffer, pH 7 to 8 containing 0.09% Sodium Azide
ISOTYPE	IgG
ORIGIN	USA
PRODUCTION PROCEDURES	Antibody was affinity purified using an epitope specific to 14-3-3 theta immobilized on solid support.

The epitope recognized by A303-146A maps to a region between residue 195 and 245 of human 14-3-3 protein theta using the numbering given in entry NP_006817.1 (GeneID 10971).

Antibody concentration was determined by extinction coefficient: absorbance at 280 nm of 1.4 equals 1.0 mg of IgG.

APPLICATIONS Centrifuge tube to remove product from lid. Optimal working dilutions should be determined experimentally by the investigator. Prepare working dilution immediately before use.

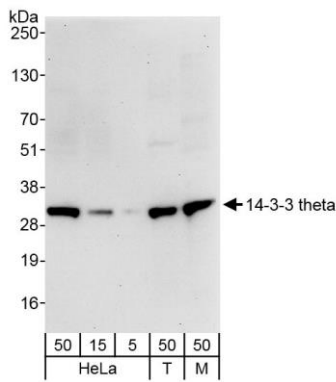
Western Blot	1:2,000 - 1:10,000
Immunoprecipitation	2 - 10 µg/mg lysate
Immunohistochemistry	1:1,000 - 1:5,000. Epitope retrieval with citrate buffer pH 6.0 is recommended for FFPE tissue sections.

APPLICATION NOTES Western blot of immunoprecipitates performed using Normal Pig Serum (Cat. No. S100-020), Goat anti-Rabbit Light Chain HRP Conjugate (Cat. No. A120-113P) and 4-20% SDS-PAGE (link to IP-western blot protocol in Additional Info section below).

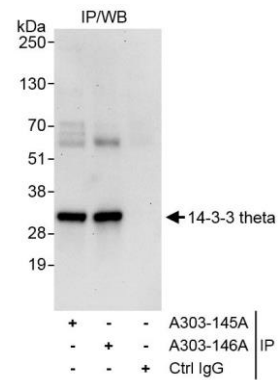
IHC HUMAN CONTROLS Western blot of lysates performed using standard western blot reagents and 4-20% SDS-PAGE. Breast Carcinoma, Colon Carcinoma, Stomach Adenocarcinoma, Testicular Seminoma

ADDITIONAL INFO <https://www.bethyl.com/product/A303-146A>
Use the link above to view SDS, a current list of citations, and other product specific information.
IP-western blot protocol https://www.bethyl.com/content/protocol_IP_WB

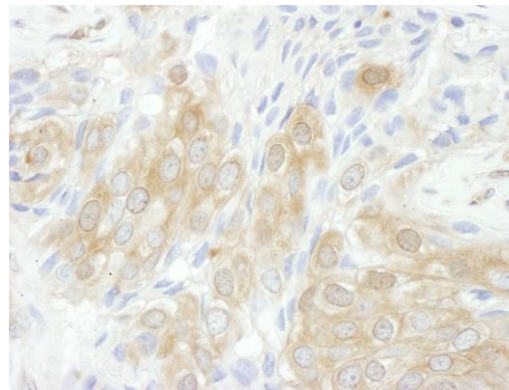
This document certifies that this product has met all of the quality control standards defined by Bethyl Laboratories, Inc.
Eric McIntush, PhD | Chief Scientific Officer Date: November 12, 2019



Detection of human and mouse 14-3-3-theta by western blot. *Samples:* Whole cell lysate from HeLa (5, 15, and 50 µg), HEK293T (T; 50 µg), and mouse NIH 3T3 (M; 50 µg) cells. *Antibody:* Affinity purified rabbit anti-14-3-3-theta antibody A303-146A (lot A303-146A-1) used at 0.1 µg/ml. *Detection:* Chemiluminescence with an exposure time of 30 seconds.



Detection of human 14-3-3-theta by western blot of immunoprecipitates. *Samples:* Whole cell lysate (1 mg for IP, 20% of IP loaded) from HeLa cells. *Antibodies:* Affinity purified rabbit anti-14-3-3-theta antibody A303-146A (lot A303-146A-1) used for IP at 6 µg/mg lysate. 14-3-3-theta was also immunoprecipitated by rabbit anti-14-3-3-theta antibody A303-145A, which recognizes an upstream epitope. For blotting immunoprecipitated 14-3-3-theta, A303-146A was used at 1.0 µg/ml. *Detection:* Chemiluminescence with exposure time of 30 seconds.



Detection of human 14-3-3-theta by immunohistochemistry. *Sample:* FFPE section of human breast carcinoma. *Antibody:* Affinity purified rabbit anti-14-3-3-theta (Cat. No. A303-146A Lot1) used at a dilution of 1:5,000 (0.2µg/ml). *Detection:* DAB