

SENP3 Antibody

Rabbit Polyclonal

Antigen Affinity Purified

Protein ID NP_056485.2

Catalog No. A303-139A

GeneID 26168

Lot No. A303-139A-1



APPLICATIONS	WB, IP, IHC
SPECIES REACTIVITY	Human, Mouse
AMOUNT	100 µl
CONCENTRATION	1000 µg/ml
STORAGE/SHELF LIFE	2 - 8° C / 1 year from date of receipt
PHYSICAL STATE	Liquid
BUFFER	Tris-citrate/phosphate buffer, pH 7 to 8 containing 0.09% Sodium Azide
ISOTYPE	IgG
ORIGIN	USA
PRODUCTION PROCEDURES	Antibody was affinity purified using an epitope specific to SENP3 immobilized on solid support.

The epitope recognized by A303-139A maps to a region between residue 1 and 50 of human SUMO1/Sentrin/SMT3 Specific Peptidase 3 using the numbering given in entry NP_056485.2 (GeneID 26168).

Antibody concentration was determined by extinction coefficient: absorbance at 280 nm of 1.4 equals 1.0 mg of IgG.

APPLICATIONS Centrifuge tube to remove product from lid. Optimal working dilutions should be determined experimentally by the investigator. Prepare working dilution immediately before use.

Western Blot 1:2,000 - 1:10,000

Immunoprecipitation 2 - 10 µg/mg lysate

Immunohistochemistry 1:500 - 1:2,000. Epitope retrieval with citrate buffer pH 6.0 is recommended for FFPE tissue sections.

APPLICATION NOTES Western blot of immunoprecipitates performed using Normal Pig Serum (Cat. No. S100-020), Goat anti-Rabbit Light Chain HRP Conjugate (Cat. No. A120-113P) and 4-20% SDS-PAGE (link to IP-western blot protocol in Additional Info section below).

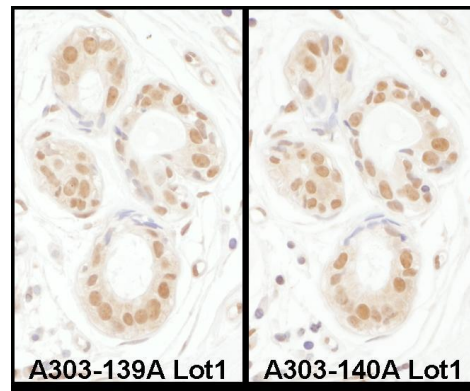
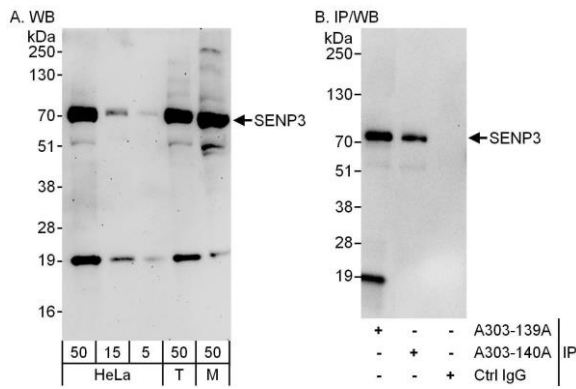
IHC HUMAN CONTROLS Western blot of lysates performed using standard western blot reagents and 4-20% SDS-PAGE. Breast Carcinoma, Ovarian Carcinoma, Stomach Adenocarcinoma

ADDITIONAL INFO <https://www.bethyl.com/product/A303-139A>

Use the link above to view SDS, a current list of citations, and other product specific information.

IP-western blot protocol: https://www.bethyl.com/content/protocol_IP_WB

This document certifies that this product has met all of the quality control standards defined by Bethyl Laboratories, Inc.
Eric McIntush, PhD | Chief Scientific Officer Date: June 21, 2019



Detection of human and mouse SENP3 by western blot (h & m) and immunoprecipitation (h). *Samples:* Whole cell lysate from HeLa (5, 15 and 50 µg for WB; 1 mg for IP, 20% of IP loaded), HEK293T (T; 50 µg) and mouse NIH 3T3 (M; 50 µg) cells. *Antibodies:* Affinity purified rabbit anti-SENP3 antibody A303-139A used for WB at 0.1 µg/ml (A) and 1 µg/ml (B) and used for IP at 6 µg/mg lysate. SENP3 was also immunoprecipitated by rabbit anti-SENP3 antibody A303-140A, which recognizes a downstream epitope. *Detection:* Chemiluminescence with exposure times of 3 minutes (A) and 10 seconds (B).

Detection of human SENP3 by immunohistochemistry. *Samples:* FFPE serial sections of human breast carcinoma. *Antibody:* Affinity purified rabbit anti- SENP3 (Cat. No. A303-139A Lot1, left image and Cat. No. A303-140A Lot1, right image) used at a dilution of 1:1,000 (1 µg/ml). *Detection:* DAB. *Counterstain:* Hematoxylin (blue).