

# NF110 Antibody

Rabbit Polyclonal

Antigen Affinity Purified

Protein ID NP\_036350.2

Catalog No. A303-122A

GeneID 3609

Lot No. A303-122A-3



<b>APPLICATIONS</b>	WB, IP, IHC
<b>SPECIES REACTIVITY</b>	Human, Mouse
<b>AMOUNT</b>	100 µl
<b>CONCENTRATION</b>	1000 µg/ml
<b>STORAGE/SHELF LIFE</b>	2 – 8° C / 1 year from date of receipt
<b>PHYSICAL STATE</b>	Liquid
<b>BUFFER</b>	Tris-citrate/phosphate buffer, pH 7 to 8 containing 0.09% Sodium Azide
<b>ISOTYPE</b>	IgG
<b>ORIGIN</b>	USA
<b>PRODUCTION PROCEDURES</b>	Antibody was affinity purified using an epitope specific to NF110 immobilized on solid support.

The epitope recognized by A303-122A maps to a region between residue 456 and 506 of human Nuclear Factor of Activated T-cells 110 kDa using the numbering given in entry NP\_036350.2 (GeneID 3609).

Antibody concentration was determined by extinction coefficient: absorbance at 280 nm of 1.4 equals 1.0 mg of IgG.

**APPLICATIONS** Centrifuge tube to remove product from lid. Optimal working dilutions should be determined experimentally by the investigator. Prepare working dilution immediately before use.

Western Blot 1:1,000 – 1:5,000

Immunoprecipitation 2 – 10 µg/mg lysate

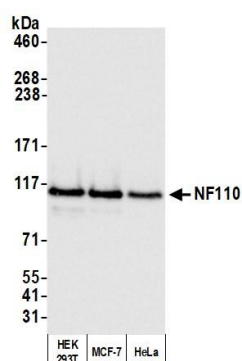
Immunohistochemistry 1:1,000 to 1:5,000. Epitope retrieval with citrate buffer pH6.0 is recommended for FFPE tissue sections.

**IHC HUMAN CONTROLS** Breast Carcinoma, Colon Carcinoma, Ovarian Carcinoma, Prostate Carcinoma, Stomach Adenocarcinoma, Testicular Seminoma

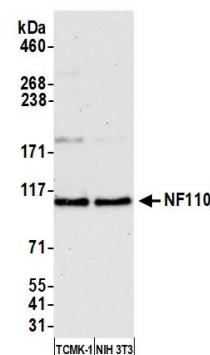
**ADDITIONAL INFO** <https://www.bethyl.com/product/A303-122A>

Use the link above to view SDS, a current list of citations, and other product specific information.  
IP-western blot protocol: [https://www.bethyl.com/content/protocol\\_IP\\_WB](https://www.bethyl.com/content/protocol_IP_WB)

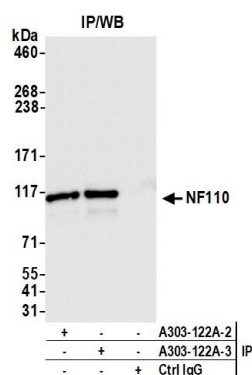
This document certifies that this product has met all of the quality control standards defined by Bethyl Laboratories, Inc.  
Eric McIntush, PhD | Chief Scientific Officer Date: April 23, 2020



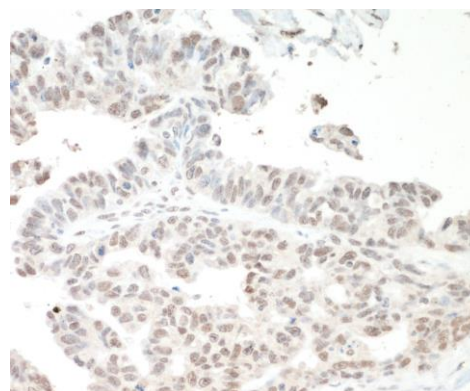
**Detection of human NF110 by western blot.** *Samples:* Whole cell lysate (50 µg) from HEK293T, MCF-7, and HeLa cells prepared using NETN lysis buffer. *Antibody:* Affinity purified rabbit anti-NF110 antibody A303-122A (lot A303-122A-3) used for WB at 0.04 µg/ml. *Detection:* Chemiluminescence with an exposure time of 3 seconds.



**Detection of mouse NF110 by western blot.** *Samples:* Whole cell lysate (50 µg) from TCMK-1 and NIH 3T3 cells prepared using NETN lysis buffer. *Antibody:* Affinity purified rabbit anti-NF110 antibody A303-122A (lot A303-122A-3) used for WB at 0.04 µg/ml. *Detection:* Chemiluminescence with an exposure time of 30 seconds.



**Detection of human NF110 by western blot of immunoprecipitates.** *Samples:* Whole cell lysate (1.0 mg per IP reaction; 20% of IP loaded) from HeLa cells prepared using NETN lysis buffer. *Antibodies:* Affinity purified rabbit anti-NF110 antibody A303-122A (lot A303-122A-3) used for IP at 6 µg per reaction. NF110 was also immunoprecipitated by a previous lot of this antibody (lot A303-122A-2). For blotting immunoprecipitated NF110, A303-122A was used at 0.04 µg/ml. *Detection:* Chemiluminescence with an exposure time of 1 second.



**Detection of human NF110 by immunohistochemistry.** *Sample:* FFPE section of human ovarian carcinoma. *Antibody:* Affinity purified rabbit anti-NF110 (Cat. No. A303-122A Lot3) used at a dilution of 1:5,000 (0.2 µg/ml). *Detection:* DAB