

EBP1 Antibody

Rabbit Polyclonal

Antigen Affinity Purified

Protein ID NP_006182.2

Catalog No. A303-083A

GeneID 5036

Lot No. A303-083A-2



APPLICATIONS	WB, IHC
SPECIES REACTIVITY	Human, Mouse
AMOUNT	100 µl
CONCENTRATION	200 µg/ml
STORAGE/SHELF LIFE	2 - 8° C / 1 year from date of receipt
PHYSICAL STATE	Liquid
BUFFER	Tris-buffered Saline containing 0.1% BSA and 0.09% Sodium Azide
ISOTYPE	IgG
ORIGIN	USA
PRODUCTION PROCEDURES	Antibody was affinity purified using an epitope specific to EBP1 immobilized on solid support.

The epitope recognized by A303-083A maps to a region between residue 300 and 345 of human ErbB-3 Binding Protein 1 using the numbering given in entry NP_006182.2 (GeneID 5036).

Antibody concentration was determined by extinction coefficient: absorbance at 280 nm of 1.4 equals 1.0 mg of IgG.

APPLICATIONS Centrifuge tube to remove product from lid. Optimal working dilutions should be determined experimentally by the investigator. Prepare working dilution immediately before use.

Western Blot 1:2,000 – 1:10,000

Immunohistochemistry 1:100 – 1:500. Epitope retrieval with citrate buffer pH 6.0 is recommended for FFPE tissue sections.

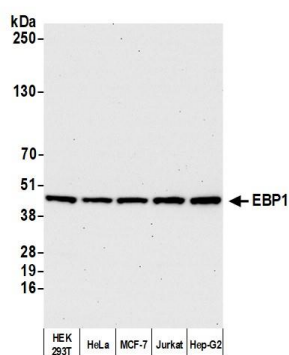
IHC HUMAN CONTROLS Breast Carcinoma, Ovarian Carcinoma, Prostate Carcinoma

ADDITIONAL INFO <https://www.bethyl.com/product/A303-083A>

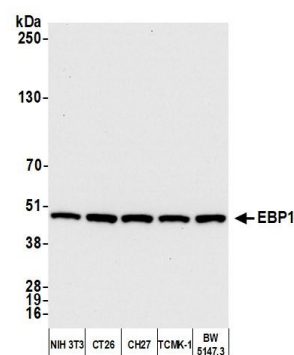
Use the link above to view SDS, a current list of citations, and other product specific information.

IP-western blot protocol: https://www.bethyl.com/content/protocol_IP_WB

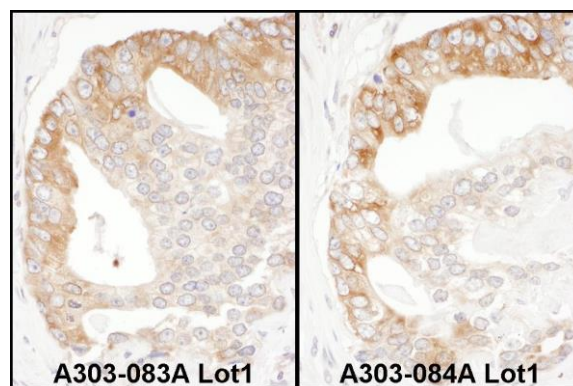
This document certifies that this product has met all of the quality control standards defined by Bethyl Laboratories, Inc.
Brian McWilliams, PhD Date: May 6, 2021



Detection of human EBP1 by western blot. *Samples:* Whole cell lysate (10 µg) from HEK293T, HeLa, MCF-7, Jurkat, and Hep-G2 cells prepared using NETN lysis buffer. *Antibody:* Affinity purified rabbit anti-EBP1 antibody (A303-083A lot 2) used for WB at 0.04 µg/ml. *Detection:* Chemiluminescence with an exposure time of 30 seconds.



Detection of mouse EBP1 by western blot. *Samples:* Whole cell lysate (10 µg) from NIH 3T3, CT26, CH27, TCMK-1, and BW5147.3 cells prepared using NETN lysis buffer. *Antibody:* Affinity purified rabbit anti-EBP1 antibody (A303-083A lot 2) used for WB at 0.04 µg/ml. *Detection:* Chemiluminescence with an exposure time of 10 seconds.



Detection of human EBP1 by immunohistochemistry.

Samples: FFPE serial sections of human prostate carcinoma. *Antibody:* Affinity purified rabbit anti-EBP1 (Cat. No. A303-083A Lot1, left image and Cat. No. A303-084A Lot1, right image) used at a dilution of 1:200 (1 µg/ml). *Detection:* DAB. *Counterstain:* hematoxylin (blue).