

LRRFIP1 Antibody

Rabbit Polyclonal

Antigen Affinity Purified

Protein ID NP_001131024.1

Catalog No. A303-079A

GeneID 9208

Lot No. A303-079A-1



APPLICATIONS	WB, IP
SPECIES REACTIVITY	Human
AMOUNT	100 µl
CONCENTRATION	200 µg/ml
STORAGE/SHELF LIFE	2 - 8° C / 1 year from date of receipt
PHYSICAL STATE	Liquid
BUFFER	Tris-buffered Saline containing 0.1% BSA and 0.09% Sodium Azide
ISOTYPE	IgG
ORIGIN	USA
PRODUCTION PROCEDURES	Antibody was affinity purified using an epitope specific to LRRFIP1 immobilized on solid support.

The epitope recognized by A303-079A maps to a region between residue 500 and 550 of human Leucine Rich Repeat (in FLII) Interacting Protein 1 using the numbering given in entry NP_001131024.1 (GeneID 9208).

Antibody concentration was determined by extinction coefficient: absorbance at 280 nm of 1.4 equals 1.0 mg of IgG.

APPLICATIONS Centrifuge tube to remove product from lid. Optimal working dilutions should be determined experimentally by the investigator. Prepare working dilution immediately before use.

Western Blot 1:2,000 - 1:10,000

Immunoprecipitation 2 - 5 µg/mg lysate

APPLICATION NOTES Western blot of immunoprecipitates performed using Normal Pig Serum (Cat. No. S100-020), Goat anti-Rabbit Light Chain HRP Conjugate (Cat. No. A120-113P) and 4-8% SDS-PAGE (link to IP-western blot protocol in Additional Info section below).

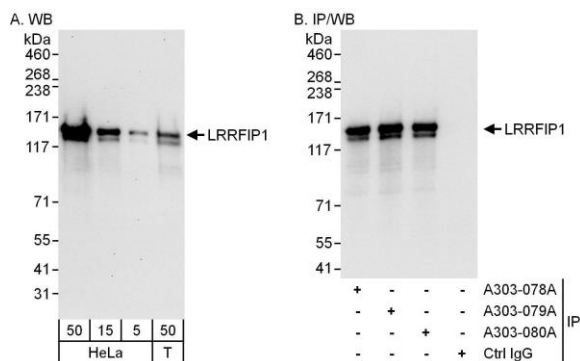
Western blot of lysates performed using standard western blot reagents and 4-8% SDS-PAGE.

ADDITIONAL INFO <https://www.bethyl.com/product/A303-079A>

Use the link above to view SDS, a current list of citations, and other product specific information.

IP-western blot protocol: https://www.bethyl.com/content/protocol_IP_WB

This document certifies that this product has met all of the quality control standards defined by Bethyl Laboratories, Inc.
Eric McIntush, PhD | Chief Scientific Officer Date: June 21, 2019



Detection of human LRRFIP1 by western blot and immunoprecipitation. *Samples:* Whole cell lysate from HeLa (5, 15 and 50 μ g for WB; 1 mg for IP, 20% of IP loaded) and HEK293T (T; 50 μ g) cells. *Antibodies:* Affinity purified rabbit anti-LRRFIP1 antibody A303-079A used for WB at 0.04 μ g/ml (A) and 0.4 μ g/ml (B) and used for IP at 6 μ g/mg lysate. LRRFIP1 was also immunoprecipitated by rabbit anti-LRRFIP1 antibodies A303-078A and A303-080A, which recognize other epitopes. *Detection:* Chemiluminescence with exposure times of 30 seconds (A) and 3 seconds (B).