

RFX1 Antibody

Rabbit Polyclonal

Antigen Affinity Purified	RefSeq ID	NP_002909.4
Catalog No. A303-043A	Uniprot ID	P22670
Lot No. 3	GeneID	5989

APPLICATIONS	WB, IP, IHC
SPECIES REACTIVITY	Human, Mouse
AMOUNT	100 µl
CONCENTRATION	200 µg/ml
STORAGE/SHELF LIFE	2 – 8°C / 1 year from date of receipt
PHYSICAL STATE	Liquid
BUFFER	Tris-buffered Saline containing 0.1% BSA and 0.09% Sodium Azide
ISOTYPE	IgG
ORIGIN	USA
PRODUCTION PROCEDURES	Antibody was affinity purified using an epitope specific to RFX1 immobilized on solid support.

The epitope recognized by A303-043A maps to a region between residue 929 and 979 of human Regulatory Factor X, 1 using the numbering given in entry NP_002909.4 (GeneID 5989).

Antibody concentration was determined by extinction coefficient: absorbance at 280 nm of 1.4 equals 1.0 mg of IgG.

APPLICATIONS Centrifuge tube to remove product from lid. Optimal working dilutions should be determined experimentally by the investigator. Prepare working dilution immediately before use.

Western Blot	1:2,000 – 1:10,000
Immunoprecipitation	2 – 10 µg/mg lysate
Immunohistochemistry	1:200 to 1:1000. Epitope retrieval with citrate buffer pH6.0 is recommended for FFPE tissue sections.

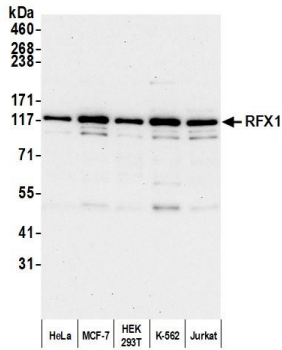
IHC HUMAN CONTROLS Breast Carcinoma, Ovarian Carcinoma, Prostate Carcinoma, Stomach Adenocarcinoma

IHC MOUSE CONTROLS Renal Cell Carcinoma

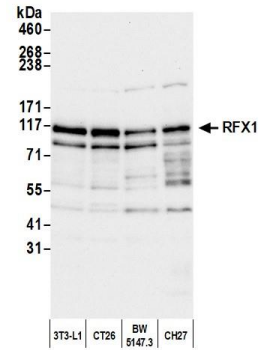
ADDITIONAL INFO <https://www.fortislife.com/p/A303-043A>

Use the link above to view SDS, a current list of citations, and other product specific information.

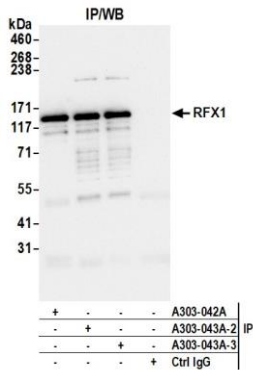
This document certifies that this product has met all of the quality control standards defined by Bethyl Laboratories, Inc.
Michael Spencer, PhD Date: August 30, 2023



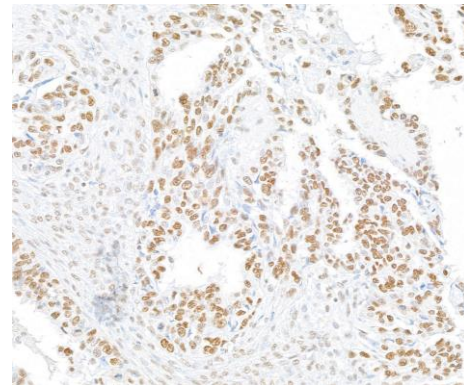
Detection of human RFX1 by western blot. *Samples:* Whole cell lysate (5 µg) from HeLa, MCF-7, HEK293T, K-562, and Jurkat cells prepared using NETN lysis buffer. *Antibody:* Affinity purified rabbit anti-RFX1 antibody (A303-043A lot 3) used for WB at 0.04 µg/ml. *Detection:* Chemiluminescence with an exposure time of 75 seconds.



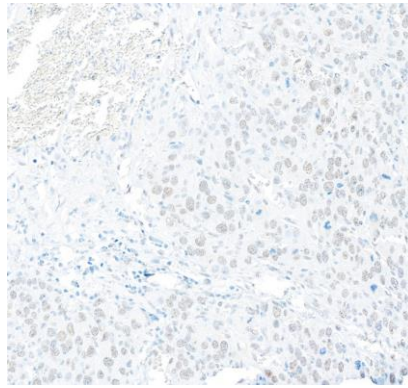
Detection of mouse RFX1 by western blot. *Samples:* Whole cell lysate (25 µg) from 3T3-L1, CT26, BW5147.3, and CH27 cells prepared using NETN lysis buffer. *Antibody:* Affinity purified rabbit anti-RFX1 antibody (A303-043A lot 3) used for WB at 0.04 µg/ml. *Detection:* Chemiluminescence with an exposure time of 30 seconds.



Detection of human RFX1 by western blot of immunoprecipitates. *Samples:* Whole cell lysate (1 mg per IP; 10% of IP loaded) from HEK293T cells prepared using NETN lysis buffer. *Antibodies:* Affinity purified rabbit anti-RFX1 antibody (A303-043A lot 3) used for IP at 6 µg per reaction. RFX1 was also immunoprecipitated by a previous lot of this antibody (A303-043A lot 2) and a second antibody against a different epitope of RFX1 (A303-042A). For blotting immunoprecipitated RFX1, A303-043A was used at 0.04 µg/ml. *Detection:* Chemiluminescence with an exposure time of 10 seconds.



Detection of human RFX1 by immunohistochemistry. *Sample:* FFPE section of human ovarian carcinoma. *Antibody:* Affinity purified rabbit anti-RFX1 (Cat. No. A303-043A Lot3) used at a dilution of 1:1,000 (0.2µg/ml). *Detection:* DAB. Counterstain: Hematoxylin (blue).

**Detection of mouse RFX1 by immunohistochemistry.**

Sample: FFPE section of mouse renal cell carcinoma.

Antibody: Affinity purified rabbit anti- RFX1 (Cat. No.

A303-043A Lot3) used at a dilution of 1:1,000 (0.2 μ g/ml).

Detection: DAB