

# ATF1 Antibody

Rabbit Polyclonal

Antigen Affinity Purified

Protein ID NP\_005162.1

Catalog No. A303-034A

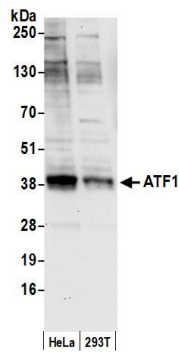
GeneID 466

Lot No. A303-034A-2

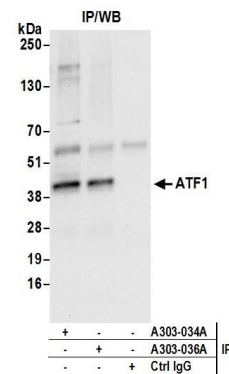


<b>APPLICATIONS</b>	WB, IP, IHC
<b>SPECIES REACTIVITY</b>	Human
<b>AMOUNT</b>	100 µl
<b>CONCENTRATION</b>	200 µg/ml
<b>STORAGE/SHELF LIFE</b>	2 - 8° C / 1 year from date of receipt
<b>PHYSICAL STATE</b>	Liquid
<b>BUFFER</b>	Tris-buffered Saline containing 0.1% BSA and 0.09% Sodium Azide
<b>ISOTYPE</b>	IgG
<b>ORIGIN</b>	USA
<b>PRODUCTION PROCEDURES</b>	<p>Antibody was affinity purified using an epitope specific to ATF1 immobilized on solid support.</p> <p>The epitope recognized by A303-034A maps to a region between residue 1 and 50 of human Activating Transcription Factor 1 using the numbering given in entry NP_005162.1 (GeneID 466).</p> <p>Antibody concentration was determined by extinction coefficient: absorbance at 280 nm of 1.4 equals 1.0 mg of IgG.</p>
<b>APPLICATIONS</b>	<p>Centrifuge tube to remove product from lid. Optimal working dilutions should be determined experimentally by the investigator. Prepare working dilution immediately before use.</p> <p>Western Blot 1:2,000 – 1:10,000</p> <p>Immunoprecipitation 2 – 10 µg/mg lysate</p> <p>Immunohistochemistry 1:200 – 1:1,000. Epitope retrieval with citrate buffer pH 6.0 is recommended for FFPE tissue sections.</p>
<b>APPLICATION NOTES</b>	<p>Western blot of immunoprecipitates performed using Normal Pig Serum (Cat. No. S100-020), Goat anti-Rabbit Light Chain HRP Conjugate (Cat. No. A120-113P) and 4-20% SDS-PAGE (link to IP-western blot protocol in Additional Info section below).</p> <p>Western blot of lysates performed using standard western blot reagents and 4-20% SDS-PAGE.</p>
<b>IHC HUMAN CONTROLS</b>	Breast Carcinoma, Ovarian Carcinoma, Prostate Carcinoma
<b>ADDITIONAL INFO</b>	<p><a href="https://www.bethyl.com/product/A303-034A">https://www.bethyl.com/product/A303-034A</a></p> <p>Use the link above to view SDS, a current list of citations, and other product specific information.</p> <p>IP-western blot protocol: <a href="https://www.bethyl.com/content/protocol_IP_WB">https://www.bethyl.com/content/protocol_IP_WB</a></p>

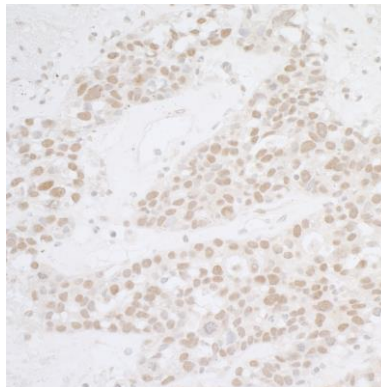
This document certifies that this product has met all of the quality control standards defined by Bethyl Laboratories, Inc.  
Eric McIntush, PhD | Chief Scientific Officer Date: June 21, 2019



**Detection of human ATF1 by western blot.** *Samples:* Whole cell lysate (50 µg) from HeLa and HEK293T cells prepared using NETN lysis buffer. *Antibody:* Affinity purified rabbit anti-ATF1 antibody A303-034A (lot A303-034A-2) used for WB at 0.1 µg/ml. *Detection:* Chemiluminescence with an exposure time of 30 seconds.



**Detection of human ATF1 by western blot of immunoprecipitates.** *Samples:* Whole cell lysate (0.5 or 1.0 mg per IP reaction; 20% of IP loaded) from HeLa cells prepared using NETN lysis buffer. *Antibodies:* Affinity purified rabbit anti-ATF1 antibody A303-034A (lot A303-034A-2) used for IP at 6 µg per reaction. ATF1 was also immunoprecipitated by rabbit anti-ATF1 antibody A303-036A. For blotting immunoprecipitated ATF1, A303-034A was used at 0.4 µg/ml. *Detection:* Chemiluminescence with an exposure time of 10 seconds.



**Detection of human ATF1 by immunohistochemistry.**  
*Sample:* FFPE section of human ovarian carcinoma.  
*Antibody:* Affinity purified rabbit anti- ATF1 ( Cat. No. A303-034A Lot 2) used at a dilution of 1:1,000 (0.2µg/ml).  
*Detection:* DAB. *Counterstain:* hematoxylin (blue).