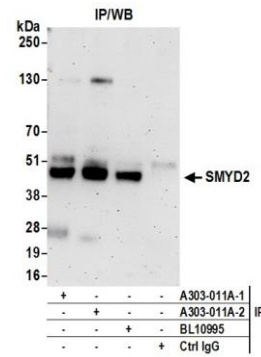


Detection of human and mouse SMYD2 by western blot.
Samples: Whole cell lysate (50 & 15 µg) from HeLa, (50 µg) from HEK293T, Jurkat, and mouse NIH 3T3 cells prepared using NETN lysis buffer. *Antibody:* Affinity purified rabbit anti-SMYD2 antibody A303-011A (lot A303-011A-2) used for WB at 0.1 µg/ml. *Detection:* Chemiluminescence with an exposure time of 3 minutes.



Detection of human SMYD2 by western blot of immunoprecipitates.
Samples: Whole cell lysate (0.5 or 1.0 mg per IP reaction; 20% of IP loaded) from Jurkat cells prepared using NETN lysis buffer. *Antibodies:* Affinity purified rabbit anti-SMYD2 antibody A303-011A (lot A303-011A-2) used for IP at 6 µg per reaction. SMYD2 was also immunoprecipitated by a previous lot of this antibody (lot A303-011A-1) and rabbit anti-SMYD2 antibody BL10995. For blotting immunoprecipitated SMYD2, A303-011A was used at 1 µg/ml. *Detection:* Chemiluminescence with an exposure time of 3 minutes.