

# TRM6 Antibody

Rabbit Polyclonal

Antigen Affinity Purified

Protein ID NP\_057023.2

Catalog No. A303-007A

GeneID 51605

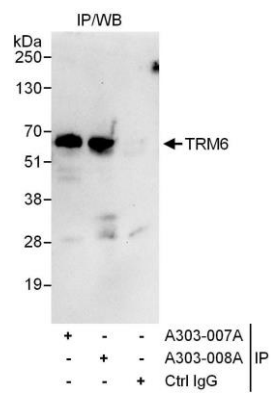
Lot No. A303-007A-1



APPLICATIONS	IP				
SPECIES REACTIVITY	Human				
AMOUNT	100 µl				
CONCENTRATION	1000 µg/ml				
STORAGE/SHELF LIFE	2 – 8° C / 1 year from date of receipt				
PHYSICAL STATE	Liquid				
BUFFER	Tris-citrate/phosphate buffer, pH 7 to 8 containing 0.09% Sodium Azide				
ISOTYPE	IgG				
ORIGIN	USA				
PRODUCTION PROCEDURES	<p>Antibody was affinity purified using an epitope specific to TRM6 immobilized on solid support.</p> <p>The epitope recognized by A303-007A maps to a region between residue 325 and 375 of human tRNA Methyltransferase 6 using the numbering given in entry NP_057023.2 (GeneID 51605).</p> <p>Antibody concentration was determined by extinction coefficient: absorbance at 280 nm of 1.4 equals 1.0 mg of IgG.</p>				
APPLICATIONS	<p>Centrifuge tube to remove product from lid. Optimal working dilutions should be determined experimentally by the investigator. Prepare working dilution immediately before use.</p> <table><tr><td>Western Blot</td><td>Not recommended</td></tr><tr><td>Immunoprecipitation</td><td>2 – 5 µg/mg lysate</td></tr></table>	Western Blot	Not recommended	Immunoprecipitation	2 – 5 µg/mg lysate
Western Blot	Not recommended				
Immunoprecipitation	2 – 5 µg/mg lysate				
APPLICATION NOTES	Western blot of immunoprecipitates performed using Normal Pig Serum (Cat. No. S100-020), Goat anti-Rabbit Light Chain HRP Conjugate (Cat. No. A120-113P) and 4-20% SDS-PAGE (link to IP-western blot protocol in Additional Info section below).				
ADDITIONAL INFO	<p><a href="https://www.bethyl.com/product/A303-007A">https://www.bethyl.com/product/A303-007A</a></p> <p>Use the link above to view SDS, a current list of citations, and other product specific information.</p> <p>IP-western blot protocol: <a href="https://www.bethyl.com/content/protocol_IP_WB">https://www.bethyl.com/content/protocol_IP_WB</a></p>				

This document certifies that this product has met all of the quality control standards defined by Bethyl Laboratories, Inc.  
Eric McIntush, PhD | Chief Scientific Officer

Date: June 21, 2019



**Detection of human TRM6 by western blot of immunoprecipitates.** *Samples:* Whole cell lysate (1 mg for IP, 20% of IP loaded) from HeLa cells. *Antibodies:* Affinity purified rabbit anti-TRM6 antibody A303-007A used for IP at 6 µg/mg lysate. TRM6 was also immunoprecipitated by rabbit anti-TRM6 antibody A303-008A, which recognizes a downstream epitope. For blotting immunoprecipitated TRM6, A303-008A was used at 1 µg/ml. *Detection:* Chemiluminescence with an exposure time of 10 seconds.