

# ANKRD50 Antibody

Rabbit Polyclonal

Antigen Affinity Purified

Protein ID NP\_065070.1

Catalog No. A303-000A

GeneID 57182

Lot No. A303-000A-1



<b>APPLICATIONS</b>	WB, IP
<b>SPECIES REACTIVITY</b>	Human, Mouse
<b>PRESUMED REACTIVITY</b>	Based on 100% sequence identity, this antibody is predicted to react with X. tropicalis, Bovine, Dog, Horse, Rabbit, Guinea pig_10141, Pig, Panda, Orangutan, Monkey, Gorilla and Chimpanzee
<b>AMOUNT</b>	100 µl
<b>CONCENTRATION</b>	1000 µg/ml
<b>STORAGE/SHELF LIFE</b>	2 – 8° C / 1 year from date of receipt
<b>PHYSICAL STATE</b>	Liquid
<b>BUFFER</b>	Tris-citrate/phosphate buffer, pH 7 to 8 containing 0.09% Sodium Azide
<b>ISOTYPE</b>	IgG
<b>ORIGIN</b>	USA
<b>PRODUCTION PROCEDURES</b>	Antibody was affinity purified using an epitope specific to ANKRD50 immobilized on solid support.

The epitope recognized by A303-000A maps to a region between residue 1379 and 1429 of human Ankyrin Repeat Domain 50 using the numbering given in entry NP\_065070.1 (GeneID 57182).

Antibody concentration was determined by extinction coefficient: absorbance at 280 nm of 1.4 equals 1.0 mg of IgG.

**APPLICATIONS** Centrifuge tube to remove product from lid. Optimal working dilutions should be determined experimentally by the investigator. Prepare working dilution immediately before use.

Western Blot 1:2,000 – 1:10,000

Immunoprecipitation 2 – 5 µg/mg lysate

**APPLICATION NOTES** Western blot of immunoprecipitates performed using Normal Pig Serum (Cat. No. S100-020), Goat anti-Rabbit Light Chain HRP Conjugate (Cat. No. A120-113P) and 4-8% SDS-PAGE (link to IP-western blot protocol in Additional Info section below).

Western blot of lysates performed using standard western blot reagents and 4-8% SDS-PAGE.

**ADDITIONAL INFO** <https://www.bethyl.com/product/A303-000A>

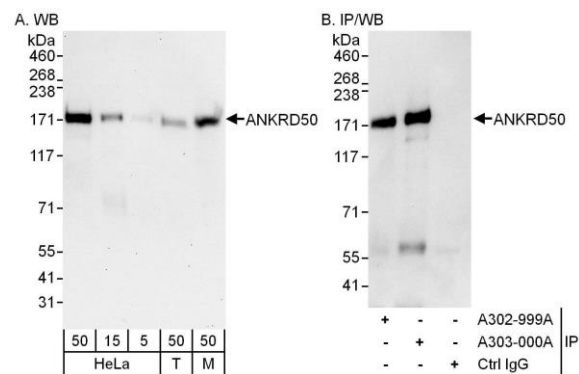
Use the link above to view SDS, a current list of citations, and other product specific information.

IP-western blot protocol: [https://www.bethyl.com/content/protocol\\_IP\\_WB](https://www.bethyl.com/content/protocol_IP_WB)

This document certifies that this product has met all of the quality control standards defined by Bethyl Laboratories, Inc.

Eric McIntush, PhD | Chief Scientific Officer

Date: June 21, 2019



**Detection of human and mouse ANKRD50 by western blot (h&m) and immunoprecipitation (h).** *Samples:* Whole cell lysate from HeLa (5, 15 and 50  $\mu$ g for WB; 1 mg for IP, 20% of IP loaded), HEK293T (T; 50  $\mu$ g) and mouse NIH 3T3 (M; 50  $\mu$ g) cells. *Antibodies:* Affinity purified rabbit anti-ANKRD50 antibody A303-000A used for WB at 0.1  $\mu$ g/ml (A) and 1  $\mu$ g/ml (B) and used for IP at 6  $\mu$ g/mg lysate. ANKRD50 was also immunoprecipitated by rabbit anti-ANKRD50 antibody A302-999A, which recognizes an upstream epitope. *Detection:* Chemiluminescence with exposure times of 30 seconds (A) and 10 seconds (B).