

# SENP7 Antibody

Rabbit Polyclonal

Antigen Affinity Purified

Protein ID EAW79800.1

Catalog No. A302-995A

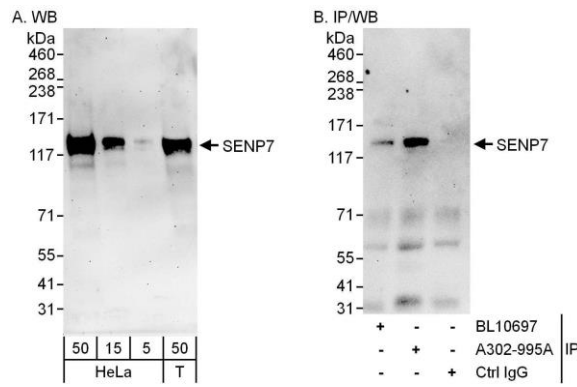
GeneID 57337

Lot No. A302-995A-1



<b>APPLICATIONS</b>	WB, IP
<b>SPECIES REACTIVITY</b>	Human
<b>PRESUMED REACTIVITY</b>	Based on 100% sequence identity, this antibody is predicted to react with Bovine
<b>AMOUNT</b>	100 µl
<b>CONCENTRATION</b>	1000 µg/ml
<b>STORAGE/SHELF LIFE</b>	2 - 8° C / 1 year from date of receipt
<b>PHYSICAL STATE</b>	Liquid
<b>BUFFER</b>	Tris-citrate/phosphate buffer, pH 7 to 8 containing 0.09% Sodium Azide
<b>ISOTYPE</b>	IgG
<b>ORIGIN</b>	USA
<b>PRODUCTION PROCEDURES</b>	<p>Antibody was affinity purified using an epitope specific to SENP7 immobilized on solid support.</p> <p>The epitope recognized by A302-995A maps to a region between residue 650 and 700 of human SUMO1/Sentrin Specific Peptidase 7 using the numbering given in entry EAW79800.1 (GeneID 57337).</p> <p>Antibody concentration was determined by extinction coefficient: absorbance at 280 nm of 1.4 equals 1.0 mg of IgG.</p>
<b>APPLICATIONS</b>	<p>Centrifuge tube to remove product from lid. Optimal working dilutions should be determined experimentally by the investigator. Prepare working dilution immediately before use.</p> <p>Western Blot                      1:1,000 - 1:5,000</p> <p>Immunoprecipitation            2 - 5 µg/mg lysate</p>
<b>APPLICATION NOTES</b>	<p>Western blot of immunoprecipitates performed using Normal Pig Serum (Cat. No. S100-020), Goat anti-Rabbit Light Chain HRP Conjugate (Cat. No. A120-113P) and 4-8% SDS-PAGE (link to IP-western blot protocol in Additional Info section below).</p> <p>Western blot of lysates performed using standard western blot reagents and 4-8% SDS-PAGE.</p>
<b>ADDITIONAL INFO</b>	<p><a href="https://www.bethyl.com/product/A302-995A">https://www.bethyl.com/product/A302-995A</a></p> <p>Use the link above to view SDS, a current list of citations, and other product specific information.</p> <p>IP-western blot protocol: <a href="https://www.bethyl.com/content/protocol_IP_WB">https://www.bethyl.com/content/protocol_IP_WB</a></p>

This document certifies that this product has met all of the quality control standards defined by Bethyl Laboratories, Inc.  
Eric McIntush, PhD | Chief Scientific Officer Date: June 21, 2019



**Detection of human SENP7 by western blot and immunoprecipitation.** *Samples:* Whole cell lysate from HeLa (5, 15 and 50 µg for WB; 1 mg for IP, 20% of IP loaded) and HEK293T (T; 50 µg) cells. *Antibodies:* Affinity purified rabbit anti-SENP7 antibody A302-995A used for WB at 0.4 µg/ml (A) and 1 µg/ml (B) and used for IP at 6 µg/mg lysate. SENP7 was also immunoprecipitated by rabbit anti-SENP7 antibody BL10697, which recognizes an upstream epitope. *Detection:* Chemiluminescence with exposure times of 3 minutes (A) and 30 seconds (B).