

eIF2B delta/EIF2B4 Antibody

Rabbit Polyclonal

Antigen Affinity Purified

Protein ID NP_001029288.1

Catalog No. A302-983A

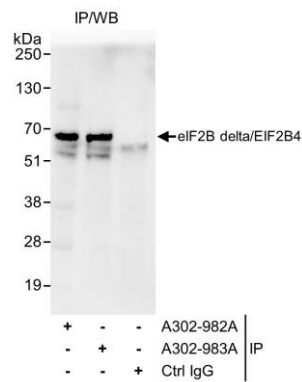
GeneID 8890

Lot No. A302-983A-1



APPLICATIONS	IP
SPECIES REACTIVITY	Human
PRESUMED REACTIVITY	Based on 100% sequence identity, this antibody is predicted to react with Mouse, Rat, Bovine and Rabbit
AMOUNT	100 μ l
CONCENTRATION	1000 μ g/ml
STORAGE/SHELF LIFE	2 - 8° C / 1 year from date of receipt
PHYSICAL STATE	Liquid
BUFFER	Tris-citrate/phosphate buffer, pH 7 to 8 containing 0.09% Sodium Azide
ISOTYPE	IgG
ORIGIN	USA
PRODUCTION PROCEDURES	Antibody was affinity purified using an epitope specific to eIF2B delta/EIF2B4 immobilized on solid support. The epitope recognized by A302-983A maps to a region between residue 473 and 523 of human Eukaryotic Translation Initiation Factor 2B, Subunit 4 delta, 67kDa using the numbering given in entry NP_001029288.1 (GeneID 8890). Antibody concentration was determined by extinction coefficient: absorbance at 280 nm of 1.4 equals 1.0 mg of IgG.
APPLICATIONS	Centrifuge tube to remove product from lid. Optimal working dilutions should be determined experimentally by the investigator. Prepare working dilution immediately before use. Western Blot Not recommended Immunoprecipitation 2 - 5 μ g/mg lysate
APPLICATION NOTES	Western blot of immunoprecipitates performed using Normal Pig Serum (Cat. No. S100-020), Goat anti-Rabbit Light Chain HRP Conjugate (Cat. No. A120-113P) and 4-20% SDS-PAGE (link to IP-western blot protocol in Additional Info section below).
ADDITIONAL INFO	https://www.bethyl.com/product/A302-983A Use the link above to view SDS, a current list of citations, and other product specific information. IP-western blot protocol: https://www.bethyl.com/content/protocol_IP_WB

This document certifies that this product has met all of the quality control standards defined by Bethyl Laboratories, Inc.
Eric McIntush, PhD | Chief Scientific Officer Date: June 21, 2019



Detection of human eIF2B delta/EIF2B4 by western blot of immunoprecipitates. *Samples:* Whole cell lysate (1 mg for IP, 20% of IP loaded) from HeLa cells. *Antibodies:* Affinity purified rabbit anti-eIF2B delta/EIF2B4 antibody A302-983A used for IP at 6 µg/mg lysate. eIF2B delta/EIF2B4 was also immunoprecipitated by rabbit anti-eIF2B delta/EIF2B4 antibody A302-982A, which recognizes an upstream epitope. For blotting immunoprecipitated eIF2B delta/EIF2B4, A302-982A was used at 0.4 µg/ml. *Detection:* Chemiluminescence with an exposure time of 10 seconds.