

eIF2B delta/EIF2B4 Antibody

Rabbit Polyclonal

Antigen Affinity Purified

Protein ID NP_001029288.1

Catalog No. A302-982A

GeneID 8890

Lot No. A302-982A-1



APPLICATIONS	WB, IP, IHC
SPECIES REACTIVITY	Human
AMOUNT	100 µl
CONCENTRATION	200 µg/ml
STORAGE/SHELF LIFE	2 – 8° C / 1 year from date of receipt
PHYSICAL STATE	Liquid
BUFFER	Tris-buffered Saline containing 0.1% BSA and 0.09% Sodium Azide
ISOTYPE	IgG
ORIGIN	USA
PRODUCTION PROCEDURES	Antibody was affinity purified using an epitope specific to eIF2B delta/EIF2B4 immobilized on solid support.

The epitope recognized by A302-982A maps to a region between residue 50 and 100 of human Eukaryotic Translation Initiation Factor 2B, Subunit 4 delta, 67kDa using the numbering given in entry NP_001029288.1 (GeneID 8890).

Antibody concentration was determined by extinction coefficient: absorbance at 280 nm of 1.4 equals 1.0 mg of IgG.

APPLICATIONS Centrifuge tube to remove product from lid. Optimal working dilutions should be determined experimentally by the investigator. Prepare working dilution immediately before use.

Western Blot 1:2,000 – 1:10,000

Immunoprecipitation 2 – 5 µg/mg lysate

Immunohistochemistry 1:200 – 1:1,000. Epitope retrieval with citrate buffer pH 6.0 is recommended for FFPE tissue sections.

APPLICATION NOTES Western blot of immunoprecipitates performed using Normal Pig Serum (Cat. No. S100-020), Goat anti-Rabbit Light Chain HRP Conjugate (Cat. No. A120-113P) and 4-20% SDS-PAGE (link to IP-western blot protocol in Additional Info section below).

Western blot of lysates performed using standard western blot reagents and 4-20% SDS-PAGE.

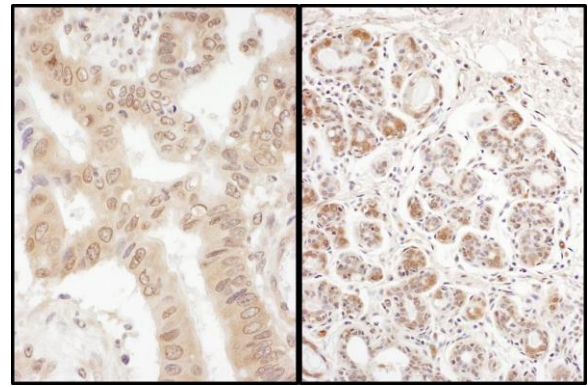
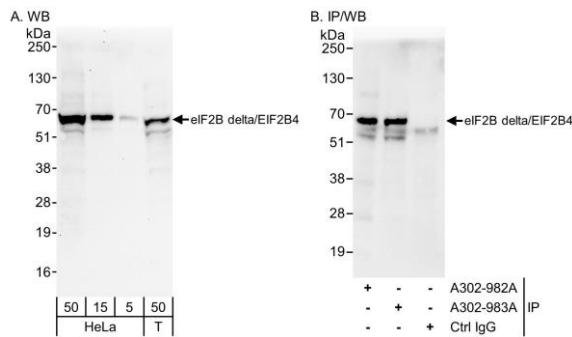
IHC HUMAN CONTROLS Breast Carcinoma, Colon Carcinoma

ADDITIONAL INFO <https://www.bethyl.com/product/A302-982A>

Use the link above to view SDS, a current list of citations, and other product specific information.

IP-western blot protocol: https://www.bethyl.com/content/protocol_IP_WB

This document certifies that this product has met all of the quality control standards defined by Bethyl Laboratories, Inc.
Eric McIntush, PhD | Chief Scientific Officer Date: June 21, 2019



Detection of human eIF2B delta/EIF2B4 by western blot and immunoprecipitation. *Samples:* Whole cell lysate from HeLa (5, 15 and 50 μg for WB; 1 mg for IP, 20% of IP loaded) and HEK293T (T; 50 μg) cells. *Antibodies:* Affinity purified rabbit anti-eIF2B delta/EIF2B4 antibody A302-982A used for WB at 0.04 $\mu\text{g}/\text{ml}$ (A) and 0.4 $\mu\text{g}/\text{ml}$ (B) and used for IP at 6 $\mu\text{g}/\text{mg}$ lysate. eIF2B delta/EIF2B4 was also immunoprecipitated by rabbit anti-eIF2B delta/EIF2B4 antibody A302-983A, which recognizes a downstream epitope. *Detection:* Chemiluminescence with exposure times of 30 seconds (A) and 10 seconds (B).

Detection of human eIF2B delta/EIF2B4 by immunohistochemistry. *Samples:* FFPE sections of human colon carcinoma and breast carcinoma. *Antibody:* Affinity purified rabbit anti-eIF2B delta/EIF2B4 (Cat. No. A302-982A Lot1) used at a dilution of 1:200 (1 $\mu\text{g}/\text{ml}$). *Detection:* DAB