

eIF4AIII/EIF4A3 Antibody

Rabbit Polyclonal

Antigen Affinity Purified

Protein ID NP_055555.1

Catalog No. A302-981A

GeneID 9775

Lot No. A302-981A-1



APPLICATIONS	WB, IP, IHC
SPECIES REACTIVITY	Human, Mouse
PRESUMED REACTIVITY	Based on 100% sequence identity, this antibody is predicted to react with Rat, Zebrafish, X. laevis, X. tropicalis, Chicken, Bovine and Pig
AMOUNT	100 µl
CONCENTRATION	200 µg/ml
STORAGE/SHELF LIFE	2 – 8° C / 1 year from date of receipt
PHYSICAL STATE	Liquid
BUFFER	Tris-buffered Saline containing 0.1% BSA and 0.09% Sodium Azide
ISOTYPE	IgG
ORIGIN	USA
PRODUCTION PROCEDURES	Antibody was affinity purified using an epitope specific to eIF4AIII/EIF4A3 immobilized on solid support.

The epitope recognized by A302-981A maps to a region between residue 125 and 175 of human Eukaryotic Translation Initiation Factor 4A3 using the numbering given in entry NP_055555.1 (GeneID 9775).

Antibody concentration was determined by extinction coefficient: absorbance at 280 nm of 1.4 equals 1.0 mg of IgG.

APPLICATIONS Centrifuge tube to remove product from lid. Optimal working dilutions should be determined experimentally by the investigator. Prepare working dilution immediately before use.

Western Blot 1:2,000 – 1:10,000

Immunoprecipitation 2 – 5 µg/mg lysate

Immunohistochemistry 1:100 – 1:500. Epitope retrieval with citrate buffer pH 6.0 is recommended for FFPE tissue sections.

APPLICATION NOTES Western blot of immunoprecipitates performed using Normal Pig Serum (Cat. No. S100-020), Goat anti-Rabbit Light Chain HRP Conjugate (Cat. No. A120-113P) and 4-20% SDS-PAGE (link to IP-western blot protocol in Additional Info section below).

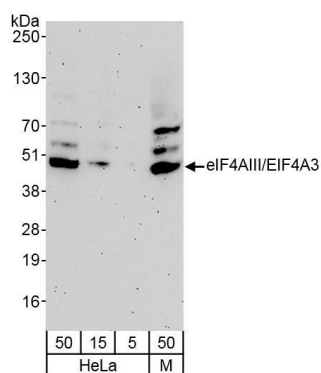
IHC HUMAN CONTROLS Western blot of lysates performed using standard western blot reagents and 4-20% SDS-PAGE. Breast Carcinoma, Colon Carcinoma, Ovarian Carcinoma, Prostate Carcinoma

IHC MOUSE CONTROLS Colon Carcinoma CT26, Renal Cell Carcinoma

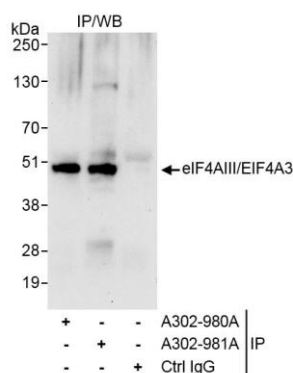
ADDITIONAL INFO <https://www.bethyl.com/product/A302-981A>

Use the link above to view SDS, a current list of citations, and other product specific information. IP-western blot protocol https://www.bethyl.com/content/protocol_IP_WB

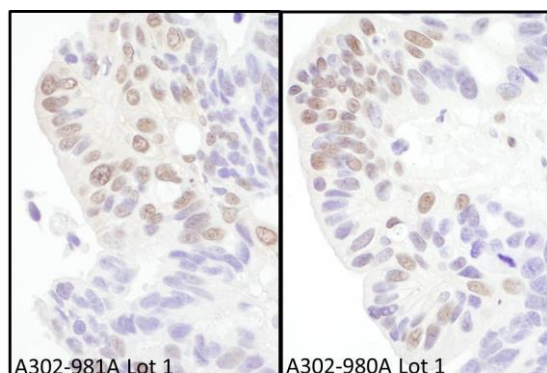
This document certifies that this product has met all of the quality control standards defined by Bethyl Laboratories, Inc.
Eric McIntush, PhD | Chief Scientific Officer Date: November 12, 2019



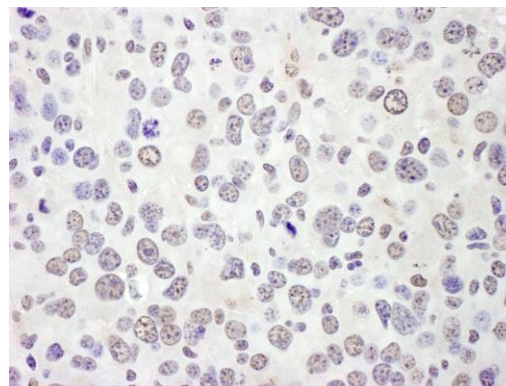
Detection of human and mouse eIF4AIII/EIF4A3 by western blot. *Samples:* Whole cell lysate from HeLa (5, 15, and 50 μ g) and mouse NIH 3T3 (M; 50 μ g) cells. *Antibody:* Affinity purified rabbit anti-eIF4AIII/EIF4A3 antibody A302-981A (lot A302-981A-1) used at 0.04 μ g/ml. *Detection:* Chemiluminescence with an exposure time of 3 minutes.



Detection of human eIF4AIII/EIF4A3 by western blot of immunoprecipitates. *Samples:* Whole cell lysate (1 mg for IP, 20% of IP loaded) from HeLa cells. *Antibodies:* Affinity purified rabbit anti-eIF4AIII/EIF4A3 antibody A302-981A (lot A302-981A-1) used for IP at 3 μ g/mg lysate. eIF4AIII/EIF4A3 was also immunoprecipitated by rabbit anti-eIF4AIII/EIF4A3 antibody A302-980A, which recognizes a downstream epitope. For blotting immunoprecipitated eIF4AIII/EIF4A3, A303-928A was used at 0.4 μ g/ml. *Detection:* Chemiluminescence with exposure time of 30 seconds.



Detection of human eIF4AIII/EIF4A3 by immunohistochemistry. *Samples:* FFPE serial sections of human ovarian carcinoma. *Antibody:* Affinity purified rabbit anti-eIF4AIII/EIF4A3 (Cat. No. A302-981A Lot1 left panel and Cat. No. A302-980A Lot1 right panel) used at a dilution of 1:200 (1 μ g/ml) and 1:5,000 (0.2 μ g/ml). *Detection:* DAB



Detection of mouse eIF4AIII/EIF4A3 by immunohistochemistry. *Sample:* FFPE section of mouse renal carcinoma. *Antibody:* Affinity purified rabbit anti-eIF4AIII/EIF4A3 (Cat. No. A302-981A Lot1) used at a dilution of 1:200 (1 μ g/ml). *Detection:* DAB