

NHERF1 Antibody

Rabbit Polyclonal

Antigen Affinity Purified

Protein ID NP_004243.1

Catalog No. A302-975A

GeneID 9368

Lot No. A302-975A-1



APPLICATIONS	WB, IP, IHC
SPECIES REACTIVITY	Human
PRESUMED REACTIVITY	Based on 100% sequence identity, this antibody is predicted to react with Mouse, Rat, Chicken and Bovine
AMOUNT	100 µl
CONCENTRATION	200 µg/ml
STORAGE/SHELF LIFE	2 – 8° C / 1 year from date of receipt
PHYSICAL STATE	Liquid
BUFFER	Tris-buffered Saline containing 0.1% BSA and 0.09% Sodium Azide
ISOTYPE	IgG
ORIGIN	USA
PRODUCTION PROCEDURES	Antibody was affinity purified using an epitope specific to NHERF1 immobilized on solid support. The epitope recognized by A302-975A maps to a region between residue 325 and 358 of human Sodium/Hydrogen Exchanger Regulatory Factor 1 using the numbering given in entry NP_004243.1 (GeneID 9368).

Antibody concentration was determined by extinction coefficient: absorbance at 280 nm of 1.4 equals 1.0 mg of IgG.

APPLICATIONS Centrifuge tube to remove product from lid. Optimal working dilutions should be determined experimentally by the investigator. Prepare working dilution immediately before use.

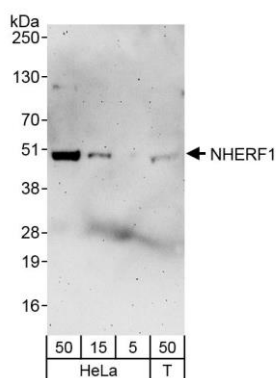
Western Blot	1:2,000 – 1:10,000
Immunoprecipitation	2 – 5 µg/mg lysate
Immunohistochemistry	1:100 – 1:500. Epitope retrieval with citrate buffer pH 6.0 is recommended for FFPE tissue sections.

APPLICATION NOTES Western blot of immunoprecipitates performed using Normal Pig Serum (Cat. No. S100-020), Goat anti-Rabbit Light Chain HRP Conjugate (Cat. No. A120-113P) and 4-20% SDS-PAGE (link to IP-western blot protocol in Additional Info section below).

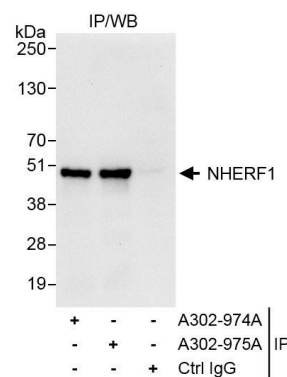
IHC HUMAN CONTROLS Western blot of lysates performed using standard western blot reagents and 4-20% SDS-PAGE. Breast Carcinoma, Non-Small Cell Lung Cancer, Ovarian Carcinoma, Prostate Carcinoma

ADDITIONAL INFO <https://www.bethyl.com/product/A302-975A>
Use the link above to view SDS, a current list of citations, and other product specific information.
IP-western blot protocol https://www.bethyl.com/content/protocol_IP_WB

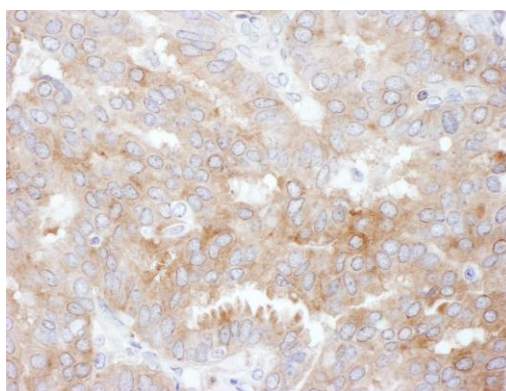
This document certifies that this product has met all of the quality control standards defined by Bethyl Laboratories, Inc.
Eric McIntush, PhD | Chief Scientific Officer Date: January 15, 2020



Detection of human NHERF1 by western blot. *Samples:* Whole cell lysate from HeLa (5, 15 and 50 µg) and HEK293T (T; 50 µg) cells. *Antibodies:* Affinity purified rabbit anti-NHERF1 antibody A302-975A used for WB at 0.04 µg/ml. *Detection:* Chemiluminescence with exposure time of 3 minutes.



Detection of human NHERF1 by western blot of immunoprecipitates. *Samples:* Whole cell lysate from HeLa (1 mg for IP, 20% of IP loaded) cells. *Antibodies:* Affinity purified rabbit anti-NHERF1 antibody A302-975A used for WB at 1 µg/ml and for IP at 3 µg/mg lysate. NHERF1 was also immunoprecipitated by rabbit anti-NHERF1 antibody A302-974A. *Detection:* Chemiluminescence with exposure time of 3 seconds.



Detection of human NHERF1 by immunohistochemistry.
Sample: FFPE section of human breast carcinoma.
Antibody: Affinity purified rabbit anti-NHERF1 (Cat. No. A302-975A Lot1) used at a dilution of 1:200 (1 µg/ml).
Detection: DAB