

COMMD4 Antibody

Rabbit Polyclonal

Antigen Affinity Purified

Protein ID NP_060298.2

Catalog No. A302-972A

GeneID 54939

Lot No. A302-972A-1



APPLICATIONS WB

SPECIES REACTIVITY Human

AMOUNT 100 µl

CONCENTRATION 1000 µg/ml

STORAGE/SHELF LIFE 2 - 8° C / 1 year from date of receipt

PHYSICAL STATE Liquid

BUFFER Tris-citrate/phosphate buffer, pH 7 to 8 containing 0.09% Sodium Azide

ISOTYPE IgG

ORIGIN USA

PRODUCTION PROCEDURES Antibody was affinity purified using an epitope specific to COMMD4 immobilized on solid support.

The epitope recognized by A302-972A maps to a region between residue 149 and 199 of human COMM Domain Containing 4 using the numbering given in entry NP_060298.2 (GeneID 54939).

Antibody concentration was determined by extinction coefficient: absorbance at 280 nm of 1.4 equals 1.0 mg of IgG.

APPLICATIONS Centrifuge tube to remove product from lid. Optimal working dilutions should be determined experimentally by the investigator. Prepare working dilution immediately before use.

Western Blot 1:2,000 - 1:10,000

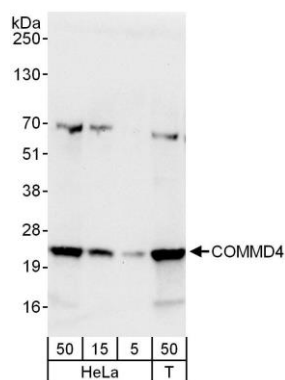
Immunoprecipitation Not recommended

APPLICATION NOTES Western blot of lysates performed using standard western blot reagents and 4-20% SDS-PAGE.

ADDITIONAL INFO <https://www.bethyl.com/product/A302-972A>

Use the link above to view SDS, a current list of citations, and other product specific information.

This document certifies that this product has met all of the quality control standards defined by Bethyl Laboratories, Inc.
Eric McIntush, PhD | Chief Scientific Officer Date: June 21, 2019



Detection of human COMMD4 by western blot. *Samples:* Whole cell lysate from HeLa (5, 15 and 50 µg for WB) and HEK293T (T; 50 µg) cells. *Antibodies:* Affinity purified rabbit anti-COMMD4 antibody A302-972A used for WB at 0.4 µg/ml. *Detection:* Chemiluminescence with an exposure time of 10 seconds.