

DGKzeta Antibody

Rabbit Polyclonal

Antigen Affinity Purified

Protein ID NP_001099010.1

Catalog No. A302-967A

GeneID 8525

Lot No. A302-967A-2



APPLICATIONS	WB, IHC
SPECIES REACTIVITY	Human
PRESUMED REACTIVITY	Based on 100% sequence identity, this antibody is predicted to react with Mouse and Rat
AMOUNT	100 µl
CONCENTRATION	1000 µg/ml
STORAGE/SHELF LIFE	2 - 8° C / 1 year from date of receipt
PHYSICAL STATE	Liquid
BUFFER	Tris-citrate/phosphate buffer, pH 7 to 8 containing 0.09% Sodium Azide
ISOTYPE	IgG
ORIGIN	USA
PRODUCTION PROCEDURES	Antibody was affinity purified using an epitope specific to DGKzeta immobilized on solid support.

The epitope recognized by A302-967A maps to a region between residue 1067 and 1117 of human Diacylglycerol Kinase Zeta using the numbering given in entry NP_001099010.1 (GeneID 8525).

Antibody concentration was determined by extinction coefficient: absorbance at 280 nm of 1.4 equals 1.0 mg of IgG.

APPLICATIONS Centrifuge tube to remove product from lid. Optimal working dilutions should be determined experimentally by the investigator. Prepare working dilution immediately before use.

Western Blot 1:10,000 – 1:25,000

Immunoprecipitation Not recommended

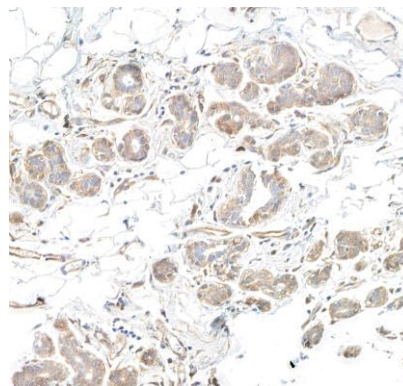
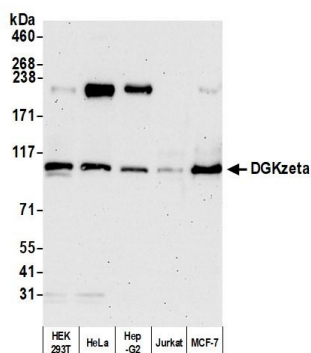
Immunohistochemistry 1:500 to 1:2,000. Epitope retrieval with citrate buffer pH6.0 is recommended for FFPE tissue sections.

IHC HUMAN CONTROLS Breast Carcinoma, Ovarian Carcinoma, Testicular Seminoma

ADDITIONAL INFO <https://www.bethyl.com/product/A302-967A>

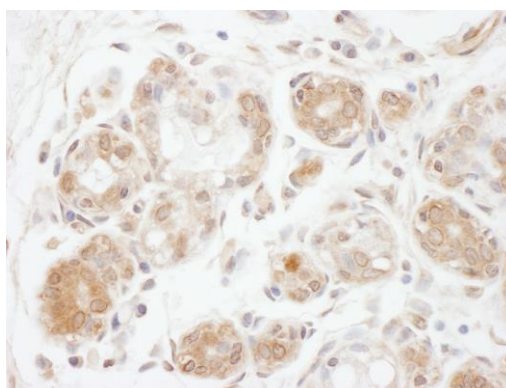
Use the link above to view SDS, a current list of citations, and other product specific information.

This document certifies that this product has met all of the quality control standards defined by Bethyl Laboratories, Inc.
Eric McIntush, PhD | Chief Scientific Officer Date: October 19, 2020



Detection of human DGKzeta by western blot. *Samples:* Whole cell lysate (2 to 5 µg) from HEK293T, HeLa, Hep-G2, Jurkat, and MCF-7 cells prepared using NETN lysis buffer. *Antibody:* Affinity purified rabbit anti-DGKzeta antibody A302-967A lot 2 used for WB at 0.04 µg/ml. *Detection:* Chemiluminescence with an exposure time of 75 seconds.

Detection of human DGKzeta by immunohistochemistry. *Sample:* FFPE section of human breast carcinoma. *Antibody:* Affinity purified rabbit anti-DGKzeta (A302-967A Lot 2) used at a dilution of 1:5,000 (0.2 µg/ml). *Detection:* DAB



Detection of human DGKzeta by immunohistochemistry. *Sample:* FFPE section of human breast carcinoma. *Antibody:* Affinity purified rabbit anti-DGKzeta (A302-967A Lot 1) used at a dilution of 1:1,000 (1 µg/ml). *Detection:* DAB