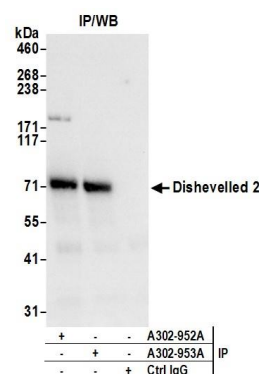


Detection of human and mouse Dishevelled 2 by western blot. *Samples:* Whole cell lysate (50 µg) from HeLa, HEK293T, Jurkat, mouse TCMK-1, and mouse NIH 3T3 cells prepared using NETN lysis buffer. *Antibody:* Affinity purified rabbit anti-Dishevelled 2 antibody A302-952A (lot A302-952A-1) used for WB at 0.1 µg/ml. *Detection:* Chemiluminescence with an exposure time of 3 minutes.



Detection of human Dishevelled 2 by western blot of immunoprecipitates. *Samples:* Whole cell lysate (0.5 or 1.0 mg per IP reaction; 20% of IP loaded) from HeLa cells prepared using NETN lysis buffer. *Antibodies:* Affinity purified rabbit anti-Dishevelled 2 antibody A302-952A (lot A302-952A-1) used for IP at 3 µg per reaction. Dishevelled 2 was also immunoprecipitated by rabbit anti-Dishevelled 2 antibody A302-953A. For blotting immunoprecipitated Dishevelled 2, A302-952A was used at 1 µg/ml. *Detection:* Chemiluminescence with an exposure time of 3 seconds.