

# WWP1 Antibody

Rabbit Polyclonal

Antigen Affinity Purified

Protein ID NP\_008944.1

Catalog No. A302-950A

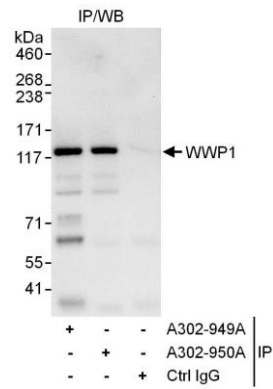
GeneID 11059

Lot No. A302-950A-1



<b>APPLICATIONS</b>	IP				
<b>SPECIES REACTIVITY</b>	Human				
<b>AMOUNT</b>	100 $\mu$ l				
<b>CONCENTRATION</b>	1000 $\mu$ g/ml				
<b>STORAGE/SHELF LIFE</b>	2 - 8° C / 1 year from date of receipt				
<b>PHYSICAL STATE</b>	Liquid				
<b>BUFFER</b>	Tris-citrate/phosphate buffer, pH 7 to 8 containing 0.09% Sodium Azide				
<b>ISOTYPE</b>	IgG				
<b>ORIGIN</b>	USA				
<b>PRODUCTION PROCEDURES</b>	<p>Antibody was affinity purified using an epitope specific to WWP1 immobilized on solid support.</p> <p>The epitope recognized by A302-950A maps to a region between residue 300 and 350 of human WW Domain Containing E3 Ubiquitin Protein Ligase 1 using the numbering given in entry NP_008944.1 (GeneID 11059).</p> <p>Antibody concentration was determined by extinction coefficient: absorbance at 280 nm of 1.4 equals 1.0 mg of IgG.</p>				
<b>APPLICATIONS</b>	<p>Centrifuge tube to remove product from lid. Optimal working dilutions should be determined experimentally by the investigator. Prepare working dilution immediately before use.</p> <table><tr><td>Western Blot</td><td>Not recommended</td></tr><tr><td>Immunoprecipitation</td><td>2 - 5 <math>\mu</math>g/mg lysate</td></tr></table>	Western Blot	Not recommended	Immunoprecipitation	2 - 5 $\mu$ g/mg lysate
Western Blot	Not recommended				
Immunoprecipitation	2 - 5 $\mu$ g/mg lysate				
<b>APPLICATION NOTES</b>	Western blot of immunoprecipitates performed using Normal Pig Serum (Cat. No. S100-020), Goat anti-Rabbit Light Chain HRP Conjugate (Cat. No. A120-113P) and 4-8% SDS-PAGE (link to IP-western blot protocol in Additional Info section below).				
<b>ADDITIONAL INFO</b>	<p><a href="https://www.bethyl.com/product/A302-950A">https://www.bethyl.com/product/A302-950A</a></p> <p>Use the link above to view SDS, a current list of citations, and other product specific information. IP-western blot protocol: <a href="https://www.bethyl.com/content/protocol_IP_WB">https://www.bethyl.com/content/protocol_IP_WB</a></p>				

This document certifies that this product has met all of the quality control standards defined by Bethyl Laboratories, Inc.  
Eric McIntush, PhD | Chief Scientific Officer Date: June 21, 2019



**Detection of human WWP1 by western blot of immunoprecipitates.** *Samples:* Whole cell lysate (1 mg for IP, 20% of IP loaded) from HeLa cells. *Antibodies:* Affinity purified rabbit anti-WWP1 antibody A302-950A used for IP at 3  $\mu\text{g}/\text{mg}$  lysate. WWP1 was also immunoprecipitated by rabbit anti-WWP1 antibody A302-949A, which recognizes an upstream epitope. For blotting immunoprecipitated WWP1, A302-949A was used at 1  $\mu\text{g}/\text{ml}$ . *Detection:* Chemiluminescence with an exposure time of 10 seconds.