

WWP2 Antibody

Rabbit Polyclonal

Antigen Affinity Purified Protein ID NP_008945.2

Catalog No. A302-936A GeneID 11060

Lot No. A302-936A-3

APPLICATIONS	WB, IP
SPECIES REACTIVITY	Human, Mouse
AMOUNT	100 µl
CONCENTRATION	1000 µg/ml
STORAGE/SHELF LIFE	2 – 8°C / 1 year from date of receipt
PHYSICAL STATE	Liquid
BUFFER	Tris-citrate/phosphate buffer, pH 7 to 8 containing 0.09% Sodium Azide
ISOTYPE	IgG
ORIGIN	USA
PRODUCTION PROCEDURES	Antibody was affinity purified using an epitope specific to WWP2 immobilized on solid support.

The epitope recognized by A302-936A maps to a region between residue 200 and 250 of human WW Domain Containing E3 Ubiquitin Protein Ligase 2 using the numbering given in entry NP_008945.2 (GeneID 11060).

Antibody concentration was determined by extinction coefficient: absorbance at 280 nm of 1.4 equals 1.0 mg of IgG.

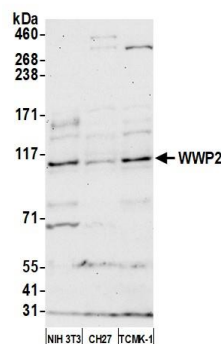
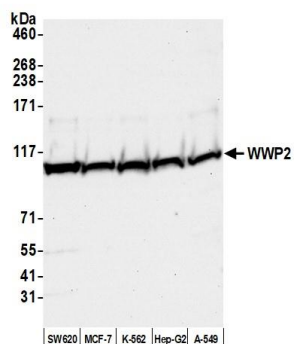
APPLICATIONS Centrifuge tube to remove product from lid. Optimal working dilutions should be determined experimentally by the investigator. Prepare working dilution immediately before use.

Western Blot 1:2,000 – 1:10,000

Immunoprecipitation 2 – 10 µg/mg lysate

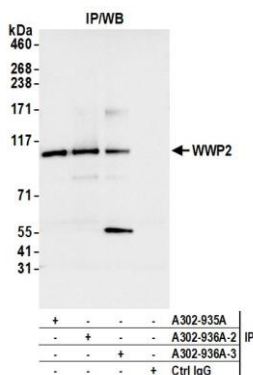
ADDITIONAL INFO <https://www.fortislife.com/p/A302-936A>
Use the link above to view SDS, a current list of citations, and other product specific information.

This document certifies that this product has met all of the quality control standards defined by Bethyl Laboratories, Inc.
Michael Spencer, PhD Date: July 29, 2022



Detection of human WWP2 by western blot. *Samples:* Whole cell lysate (50 µg) from SW620, MCF-7, K-562, Hep-G2, and A-549 cells prepared using NETN lysis buffer. *Antibody:* Affinity purified rabbit anti-WWP2 antibody (A302-936A lot 3) used for WB at 0.1 µg/ml. *Detection:* Chemiluminescence with an exposure time of 10 seconds.

Detection of mouse WWP2 by western blot. *Samples:* Whole cell lysate (50 µg) from NIH 3T3, CH27, and TCMK-1 cells prepared using NETN lysis buffer. *Antibody:* Affinity purified rabbit anti-WWP2 antibody (A302-936A lot 3) used for WB at 0.4 µg/ml. *Detection:* Chemiluminescence with an exposure time of 30 seconds.



Detection of human WWP2 by western blot of immunoprecipitates. *Samples:* Whole cell lysate (1.0 mg per IP reaction; 20% of IP loaded) from SW620 cells prepared using NETN lysis buffer. *Antibodies:* Affinity purified rabbit anti-WWP2 antibody (A302-936A lot 3) used for IP at 6 µg per reaction. WWP2 was also immunoprecipitated by a previous lot of this antibody (A302-936A lot 2) and a second antibody against a different epitope of WWP2 (A302-935A). For blotting immunoprecipitated WWP2, A302-936A was used at 1 µg/ml. *Detection:* Chemiluminescence with an exposure time of 1 second.