

# SAE2 Antibody

Rabbit Polyclonal

Antigen Affinity Purified

Protein ID NP\_005490.1

Catalog No. A302-925A

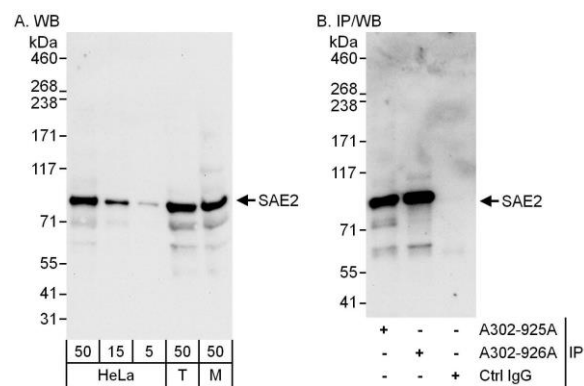
GeneID 10054

Lot No. A302-925A-1

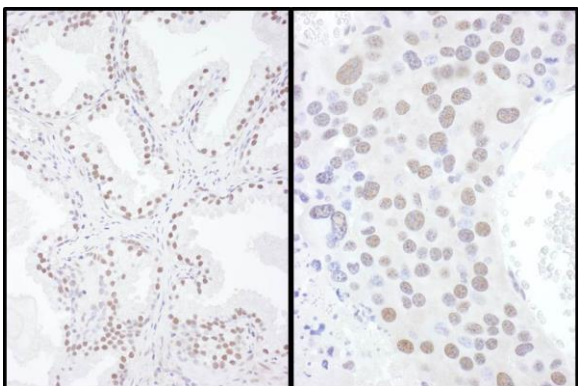


<b>APPLICATIONS</b>	WB, IP, IHC
<b>SPECIES REACTIVITY</b>	Human, Mouse
<b>AMOUNT</b>	100 µl
<b>CONCENTRATION</b>	200 µg/ml
<b>STORAGE/SHELF LIFE</b>	2 – 8° C / 1 year from date of receipt
<b>PHYSICAL STATE</b>	Liquid
<b>BUFFER</b>	Tris-buffered Saline containing 0.1% BSA and 0.09% Sodium Azide
<b>ISOTYPE</b>	IgG
<b>ORIGIN</b>	USA
<b>PRODUCTION PROCEDURES</b>	<p>Antibody was affinity purified using an epitope specific to SAE2 immobilized on solid support.</p> <p>The epitope recognized by A302-925A maps to a region between residue 525 and 575 of human SUMO1 Activating Enzyme Subunit 2 using the numbering given in entry NP_005490.1 (GeneID 10054).</p> <p>Antibody concentration was determined by extinction coefficient: absorbance at 280 nm of 1.4 equals 1.0 mg of IgG.</p>
<b>APPLICATIONS</b>	<p>Centrifuge tube to remove product from lid. Optimal working dilutions should be determined experimentally by the investigator. Prepare working dilution immediately before use.</p> <p>Western Blot 1:2,000 – 1:10,000</p> <p>Immunoprecipitation 2 – 5 µg/mg lysate</p> <p>Immunohistochemistry 1:100 – 1:500. Epitope retrieval with citrate buffer pH 6.0 is recommended for FFPE tissue sections.</p>
<b>APPLICATION NOTES</b>	Western blot of immunoprecipitates performed using Normal Pig Serum (Cat. No. S100-020), Goat anti-Rabbit Light Chain HRP Conjugate (Cat. No. A120-113P) and 4-8% SDS-PAGE (link to IP-western blot protocol in Additional Info section below).
<b>IHC HUMAN CONTROLS</b>	Western blot of lysates performed using standard western blot reagents and 4-8% SDS-PAGE. Breast Carcinoma, Colon Carcinoma, Non-Small Cell Lung Cancer, Ovarian Carcinoma, Prostate Carcinoma, Stomach Adenocarcinoma, Testicular Seminoma
<b>IHC MOUSE CONTROLS</b>	Colon Carcinoma CT26, Renal Cell Carcinoma
<b>ADDITIONAL INFO</b>	<p><a href="https://www.bethyl.com/product/A302-925A">https://www.bethyl.com/product/A302-925A</a></p> <p>Use the link above to view SDS, a current list of citations, and other product specific information. IP-western blot protocol: <a href="https://www.bethyl.com/content/protocol_IP_WB">https://www.bethyl.com/content/protocol_IP_WB</a></p>

This document certifies that this product has met all of the quality control standards defined by Bethyl Laboratories, Inc.  
Eric McIntush, PhD | Chief Scientific Officer Date: June 21, 2019



**Detection of human and mouse SAE2 by western blot (h&m) and immunoprecipitation (h).** *Samples:* Whole cell lysate from HeLa (5, 15 and 50 µg for WB; 1 mg for IP, 20% of IP loaded), HEK293T (T; 50 µg) and mouse NIH 3T3 (M; 50 µg) cells. *Antibodies:* Affinity purified rabbit anti-SAE2 antibody A302-925A used for WB at 0.1 µg/ml (A) and 1 µg/ml (B) and used for IP at 3 µg/mg lysate. SAE2 was also immunoprecipitated by rabbit anti-SAE2 antibody A302-926A, which recognizes a downstream epitope. *Detection:* Chemiluminescence with exposure times of 10 seconds (A and B).



**Detection of human and mouse SAE2 by immunohistochemistry.** *Sample:* FFPE sections of human prostate carcinoma (left) and mouse renal cell carcinoma (right). *Antibody:* Affinity purified rabbit anti- SAE2 (Cat. No. A302-925A Lot1) used at a dilution of 1:200 (1 µg/ml). *Detection:* DAB