

SmcHD1 Antibody

Rabbit Polyclonal

Antigen Affinity Purified

Protein ID NP_056110.2

Catalog No. A302-872A

GeneID 23347

Lot No. A302-872A-1



APPLICATIONS	WB, IP, IHC
SPECIES REACTIVITY	Human
AMOUNT	100 µl
CONCENTRATION	200 µg/ml
STORAGE/SHELF LIFE	2 – 8° C / 1 year from date of receipt
PHYSICAL STATE	Liquid
BUFFER	Tris-buffered Saline containing 0.1% BSA and 0.09% Sodium Azide
ISOTYPE	IgG
ORIGIN	USA
PRODUCTION PROCEDURES	Antibody was affinity purified using an epitope specific to SmcHD1 immobilized on solid support.

The epitope recognized by A302-872A maps to a region between residue 1955 and 2005 of human Structural Maintenance of Chromosomes Flexible Hinge Domain containing 1, using the numbering given in entry NP_056110.2 (GeneID 23347).

Antibody concentration was determined by extinction coefficient: absorbance at 280 nm of 1.4 equals 1.0 mg of IgG.

APPLICATIONS Centrifuge tube to remove product from lid. Optimal working dilutions should be determined experimentally by the investigator. Prepare working dilution immediately before use.

Western Blot 1:2,000 – 1:10,000

Immunoprecipitation 2 – 5 µg/mg lysate

Immunohistochemistry 1:100 – 1:500. Epitope retrieval with citrate buffer pH 6.0 is recommended for FFPE tissue sections.

APPLICATION NOTES Western blot of immunoprecipitates performed using Normal Pig Serum (Cat. No. S100-020), Goat anti-Rabbit Light Chain HRP Conjugate (Cat. No. A120-113P) and 4-8% SDS-PAGE (link to IP-western blot protocol in Additional Info section below).

Western blot of lysates performed using standard western blot reagents and 4-8% SDS-PAGE.

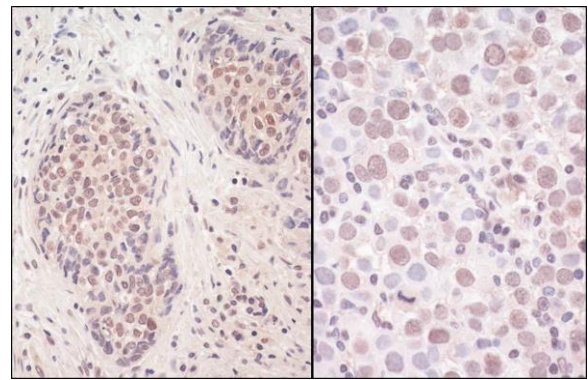
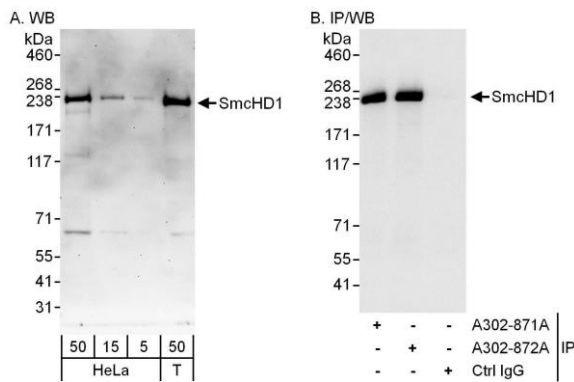
IHC HUMAN CONTROLS Non-Small Cell Lung Cancer, Testicular Seminoma

ADDITIONAL INFO <https://www.bethyl.com/product/A302-872A>

Use the link above to view SDS, a current list of citations, and other product specific information.

IP-western blot protocol: https://www.bethyl.com/content/protocol_IP_WB

This document certifies that this product has met all of the quality control standards defined by Bethyl Laboratories, Inc.
Eric McIntush, PhD | Chief Scientific Officer Date: June 21, 2019



Detection of human SmcHD1 by western blot and immunoprecipitation. *Samples:* Whole cell lysate from HeLa (5, 15 and 50 µg for WB; 1 mg for IP, 20% of IP loaded) and HEK293T (T; 50 µg) cells. *Antibodies:* Affinity purified rabbit anti-SmcHD1 antibody A302-872A used for WB at 0.04 µg/ml (A) and 0.4 µg/ml (B) and used for IP at 3 µg/mg lysate. SmcHD1 was also immunoprecipitated by rabbit anti-SmcHD1 antibody A302-871A, which recognizes an upstream epitope. *Detection:* Chemiluminescence with exposure times of 3 minutes (A) and 3 seconds (B).

Detection of human SmcHD1 by immunohistochemistry. *Sample:* FFPE section of human non-small cell lung cancer (left) and testicular seminoma (right). *Antibody:* Affinity purified rabbit anti-SmcHD1 (Cat. No. A302-872A Lot1) used at a dilution of 1:200 (1 µg/ml). *Detection:* Vector Laboratories ImmPACT NovaRED Peroxidase Substrate