

L3MBTL2 Antibody

Rabbit Polyclonal

Antigen Affinity Purified

Protein ID NP_113676.2

Catalog No. A302-868A

GeneID 83746

Lot No. A302-868A-1



APPLICATIONS	IP, IHC
SPECIES REACTIVITY	Human
PRESUMED REACTIVITY	Based on 100% sequence identity, this antibody is predicted to react with Bovine and Orangutan
AMOUNT	100 µl
CONCENTRATION	1000 µg/ml
STORAGE/SHELF LIFE	2 - 8° C / 1 year from date of receipt
PHYSICAL STATE	Liquid
BUFFER	Tris-citrate/phosphate buffer, pH 7 to 8 containing 0.09% Sodium Azide
ISOTYPE	IgG
ORIGIN	USA
PRODUCTION PROCEDURES	Antibody was affinity purified using an epitope specific to L3MBTL2 immobilized on solid support.

The epitope recognized by A302-868A maps to a region between residue 655 and 705 of human Lethal (3) Malignant Brain Tumor-Like 2 using the numbering given in entry NP_113676.2 (GeneID 83746).

Antibody concentration was determined by extinction coefficient: absorbance at 280 nm of 1.4 equals 1.0 mg of IgG.

APPLICATIONS Centrifuge tube to remove product from lid. Optimal working dilutions should be determined experimentally by the investigator. Prepare working dilution immediately before use.

Western Blot Not recommended

Immunoprecipitation 2 - 5 µg/mg lysate

Immunohistochemistry 1:1,000 - 1:5,000. Epitope retrieval with citrate buffer pH 6.0 is recommended for FFPE tissue sections.

APPLICATION NOTES Western blot of immunoprecipitates performed using Normal Pig Serum (Cat. No. S100-020), Goat anti-Rabbit Light Chain HRP Conjugate (Cat. No. A120-113P) and 4-8% SDS-PAGE (link to IP-western blot protocol in Additional Info section below).

IHC HUMAN CONTROLS Ovarian Carcinoma, Skin Squamous Cell Carcinoma

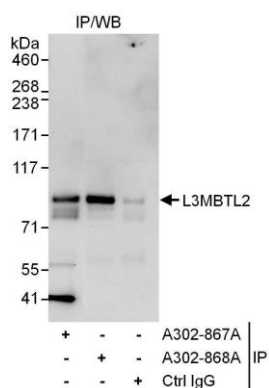
ADDITIONAL INFO <https://www.bethyl.com/product/A302-868A>

Use the link above to view SDS, a current list of citations, and other product specific information.

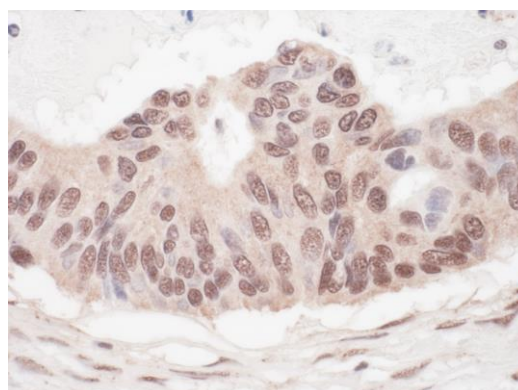
IP-western blot protocol: https://www.bethyl.com/content/protocol_IP_WB

This document certifies that this product has met all of the quality control standards defined by Bethyl Laboratories, Inc.
Eric McIntush, PhD | Chief Scientific Officer

Date: June 21, 2019



Detection of human L3MBTL2 by western blot of immunoprecipitates. *Samples:* Whole cell lysate (1 mg for IP, 20% of IP loaded) from HeLa cells. *Antibodies:* Affinity purified rabbit anti-L3MBTL2 antibody A302-868A used for IP at 3 µg/mg lysate. L3MBTL2 was also immunoprecipitated by rabbit anti-L3MBTL2 antibody A302-867A, which recognizes an upstream epitope. For blotting immunoprecipitated L3MBTL2, A302-867A was used at 1 µg/ml. *Detection:* Chemiluminescence with an exposure time of 30 seconds.



Detection of human L3MBTL2 by immunohistochemistry. *Sample:* FFPE section of human ovarian carcinoma. *Antibody:* Affinity purified rabbit anti-L3MBTL2 (Cat. No. A302-868A Lot1) used at a dilution of 1:1,000 (1 µg/ml). *Detection:* Vector ImmPACT NovaRED