

Reticulon-3 Antibody

Rabbit Polyclonal

Antigen Affinity Purified

Protein ID AAU81930.1

Catalog No. A302-860A

GeneID 10313

Lot No. A302-860A-1



APPLICATIONS WB, IP, IHC

SPECIES REACTIVITY Human

AMOUNT 100 µl

CONCENTRATION 200 µg/ml

STORAGE/SHELF LIFE 2 – 8° C / 1 year from date of receipt

PHYSICAL STATE Liquid

BUFFER Tris-buffered Saline containing 0.1% BSA and 0.09% Sodium Azide

ISOTYPE IgG

ORIGIN USA

PRODUCTION PROCEDURES Antibody was affinity purified using an epitope specific to Reticulon-3 immobilized on solid support.

The epitope recognized by A302-860A maps to a region between residue 750 and 800 of human Reticulon-3 using the numbering given in entry AAU81930.1 (GeneID 10313).

Antibody concentration was determined by extinction coefficient: absorbance at 280 nm of 1.4 equals 1.0 mg of IgG.

APPLICATIONS Centrifuge tube to remove product from lid. Optimal working dilutions should be determined experimentally by the investigator. Prepare working dilution immediately before use.

Western Blot 1:2,000 – 1:10,000

Immunoprecipitation 2 – 5 µg/mg lysate

Immunohistochemistry 1:200 – 1:1,000. Epitope retrieval with citrate buffer pH 6.0 is recommended for FFPE tissue sections.

APPLICATION NOTES Western blot of immunoprecipitates performed using Normal Pig Serum (Cat. No. S100-020), Goat anti-Rabbit Light Chain HRP Conjugate (Cat. No. A120-113P) and 4-8% SDS-PAGE (link to IP-western blot protocol in Additional Info section below).

Western blot of lysates performed using standard western blot reagents and 4-8% SDS-PAGE.

IHC HUMAN CONTROLS Ovarian Carcinoma

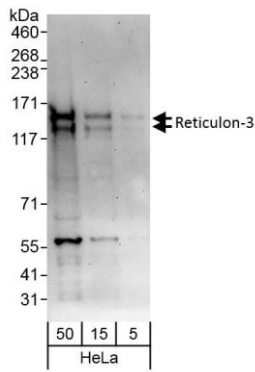
ADDITIONAL INFO <https://www.bethyl.com/product/A302-860A>

Use the link above to view SDS, a current list of citations, and other product specific information.

IP-western blot protocol https://www.bethyl.com/content/protocol_IP_WB

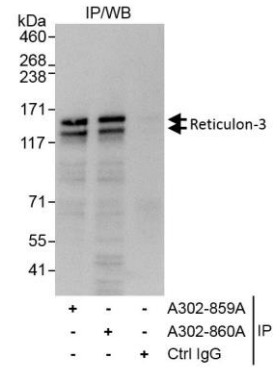
This document certifies that this product has met all of the quality control standards defined by Bethyl Laboratories, Inc.
Eric McIntush, PhD | Chief Scientific Officer

Date: November 12, 2019



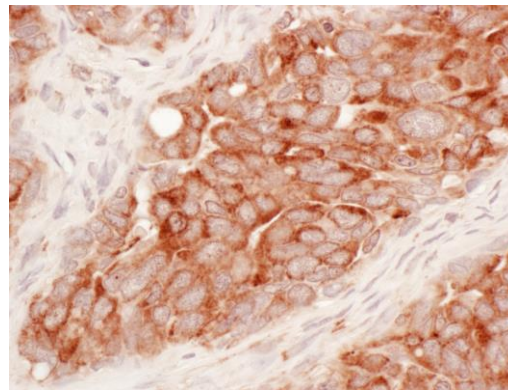
Detection of human Reticulon-3 by western blot.

Samples: Whole cell lysate (5, 15, and 50 µg) from HeLa cells. *Antibody:* Affinity purified rabbit anti-Reticulon-3 antibody A302-860A (lot A302-860A-1) used at 0.04 µg/ml. *Detection:* Chemiluminescence with an exposure time of 30 seconds.



Detection of human Reticulon-3 by western blot of immunoprecipitates.

Samples: Whole cell lysate (1 mg for IP, 20% of IP loaded) from HeLa cells. *Antibodies:* Affinity purified rabbit anti-Reticulon-3 antibody A302-860A (lot A302-860A-1) used for IP at 3 µg/mg lysate. Reticulon-3 was also immunoprecipitated by rabbit anti-Reticulon-3 antibody A302-859A, which recognizes an upstream epitope. For blotting immunoprecipitated Reticulon-3, A302-860A was used at 0.4 µg/ml. *Detection:* Chemiluminescence with exposure time of 3 seconds.



Detection of human Reticulon-3 by immunohistochemistry. *Sample:* FFPE section of human ovarian carcinoma. *Antibody:* Affinity purified rabbit anti-Reticulon-3 (Cat. No. A302-860A Lot1) used at a dilution of 1:200 (1 µg/ml). *Detection:* Vector Laboratories ImmPACT NovaRED Peroxidase Substrate