

# Sequestosome-1 Antibody

Rabbit Polyclonal

Antigen Affinity Purified

Protein ID NP\_003891.1

Catalog No. A302-857A

GeneID 8878

Lot No. A302-857A-1



<b>APPLICATIONS</b>	WB, IP, IHC
<b>SPECIES REACTIVITY</b>	Human, Mouse
<b>PRESUMED REACTIVITY</b>	Based on 100% sequence identity, this antibody is predicted to react with Rat and Orangutan
<b>AMOUNT</b>	100 µl
<b>CONCENTRATION</b>	200 µg/ml
<b>STORAGE/SHELF LIFE</b>	2 - 8° C / 1 year from date of receipt
<b>PHYSICAL STATE</b>	Liquid
<b>BUFFER</b>	Tris-buffered Saline containing 0.1% BSA and 0.09% Sodium Azide
<b>ISOTYPE</b>	IgG
<b>ORIGIN</b>	USA
<b>PRODUCTION PROCEDURES</b>	Antibody was affinity purified using an epitope specific to Sequestosome-1 immobilized on solid support.

The epitope recognized by A302-857A maps to a region between residue 425 and 440 of human Sequestosome-1 using the numbering given in entry NP\_003891.1 (GeneID 8878).

Antibody concentration was determined by extinction coefficient: absorbance at 280 nm of 1.4 equals 1.0 mg of IgG.

**APPLICATIONS** Centrifuge tube to remove product from lid. Optimal working dilutions should be determined experimentally by the investigator. Prepare working dilution immediately before use.

Western Blot 1:2,000 - 1:10,000

Immunoprecipitation 2 - 5 µg/mg lysate

Immunohistochemistry 1:100 - 1:500. Epitope retrieval with citrate buffer pH 6.0 is recommended for FFPE tissue sections.

**APPLICATION NOTES** Western blot of immunoprecipitates performed using Normal Pig Serum (Cat. No. S100-020), Goat anti-Rabbit Light Chain HRP Conjugate (Cat. No. A120-113P) and 4-20% SDS-PAGE (link to IP-western blot protocol in Additional Info section below).

Western blot of lysates performed using standard western blot reagents and 4-20% SDS-PAGE.

**IHC HUMAN CONTROLS** Breast Carcinoma

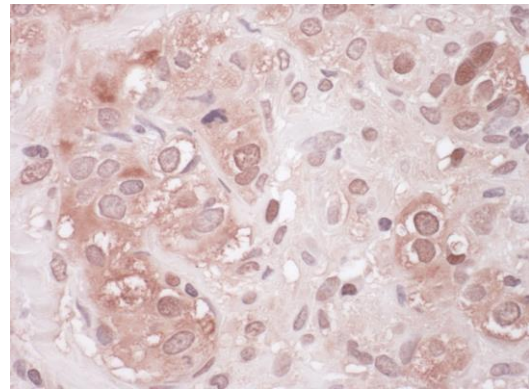
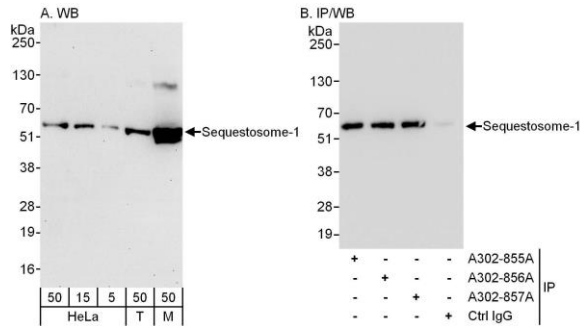
**ADDITIONAL INFO** <https://www.bethyl.com/product/A302-857A>

Use the link above to view SDS, a current list of citations, and other product specific information.

IP-western blot protocol: [https://www.bethyl.com/content/protocol\\_IP\\_WB](https://www.bethyl.com/content/protocol_IP_WB)

This document certifies that this product has met all of the quality control standards defined by Bethyl Laboratories, Inc.  
Eric McIntush, PhD | Chief Scientific Officer

Date: June 21, 2019



**Detection of human and mouse Sequestosome-1 by western blot (h&m) and immunoprecipitation (h).**

**Samples:** Whole cell lysate from HeLa (5, 15 and 50 µg for WB; 1 mg for IP, 20% of IP loaded), HEK293T (T; 50 µg), and mouse NIH 3T3 (M; 50 µg) cells. **Antibodies:** Affinity purified rabbit anti-Sequestosome-1 antibody A302-857A used for WB at 0.04 µg/ml (A) and 0.4 µg/ml (B) and used for IP at 3 µg/mg lysate. Sequestosome-1 was also immunoprecipitated by rabbit anti-Sequestosome-1 antibodies A302-855A and A302-856A, which recognize upstream epitopes. **Detection:** Chemiluminescence with exposure times of 30 seconds (A) and 3 seconds (B).

**Detection of human Sequestosome-1 by immunohistochemistry.** **Sample:** FFPE section of human breast carcinoma. **Antibody:** Affinity purified rabbit anti-Sequestosome-1 (Cat. No. A302-857A Lot1) used at a dilution of 1:200 (1 µg/ml). **Detection:** Vector Laboratories ImmPACT NovaRED Peroxidase Substrate